



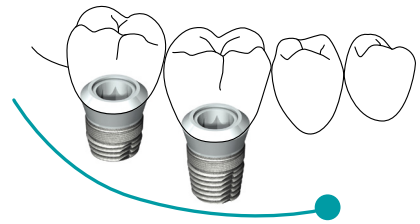
# way | short

5 and 6.5 mm



# way | short

- ▶ In posterior maxillary areas with reduced bone height, way Short is **the simplest, less expensive and faster** alternative as compared to long implants placed in regenerated bone.



## Morphology

The conical-trunk morphology and the micro-threading allow for greater **primary stability** and **homogeneous distribution of loads**.

## Simple protocol

Simple and straight forward surgical procedure, drills with integrated stop and direct positioning of the implant.

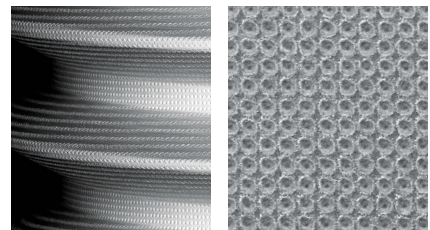
## Wide range

Way short is available in diameter 3.8-4.5-5.5 and in 5 and 6 mm length.



## Synthegra surface

The **patented laser surface** acts in two ways: it **reduces** the risks of **peri-implant infections**, while **promoting osseointegration** at the same time.





## Ample prosthetic platform

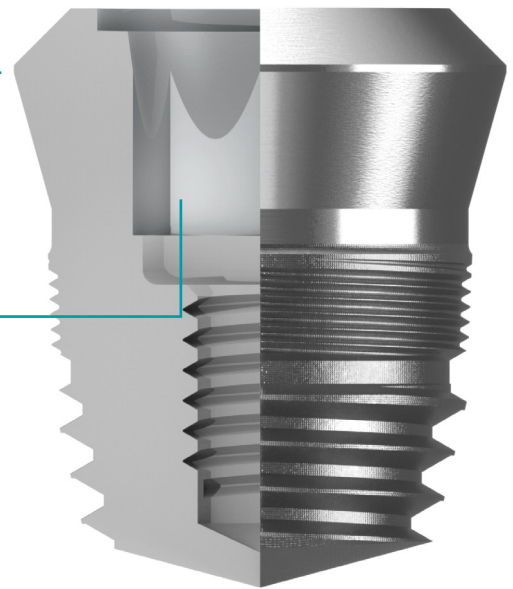
It offers major stability to **support elevated masticatory loads** in the distal sectors and it allows to create an **emergency profile adequate** to the restoration of molars.

## Emergence at soft tissue level

It guarantees the **stability of the bone levels** over time and it makes the **connection easily accessible**, facilitating the procedures in clinic.

## Implant connection

The conical connection **reduces the risks of bacterial infiltration** and **increases reliability**. The internal octagon allows for a correct **repositioning** of the components.



## Advantages

The implants way Short 5 and 6.5 mm allow for **minimally invasive** intervention, **reduced treatment times** and better **acceptance** by the **patient**.

**Geass srl**

Via Madonna della Salute, 23  
33050 Pozzuolo del Friuli (UD) Italy  
tel +39 0432 669191 info@geass.it  
[www.geass.it](http://www.geass.it)

