

**kuraray**

*Noritake*



## PRODUCT CATALOG CERAMICS

BORN IN JAPAN

SHAPING THE FUTURE OF AESTHETICS

# KURARAY NORITAKE DENTAL INC.

A century of serving mankind



## CLOSE TO YOUR NEEDS THROUGHOUT EUROPE



Symposia, Technical Trainings, manuals, IFU's, How-To-Use videos, color selection solutions, specialized appointed trainers throughout the European continent, a rich and vast academic network, papers originated from research in vitro and in vivo.

## SHAPING THE FUTURE OF AESTHETICS

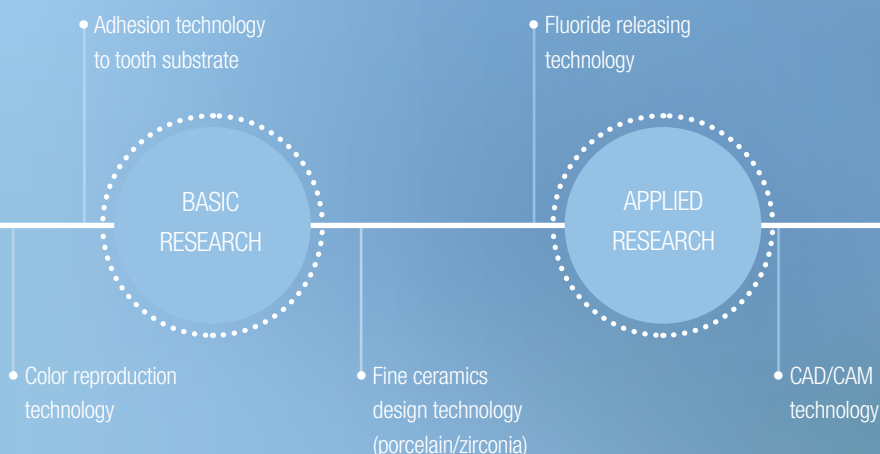


- Innovator of next generation dental products
- Inventor of adhesive monomer MDP
- Adhesive first-rate standard: CLEARFIL™ and PANAVIA™
- World's first multi-layered zirconia: KATANA™

## RESEARCH & DEVELOPMENT

Dental Innovation track record of 40 years. More than 70 patents assigned since 2010.

## KURARAY NORITAKE DENTAL SUPPLY



## TAKING RESPONSIBILITY

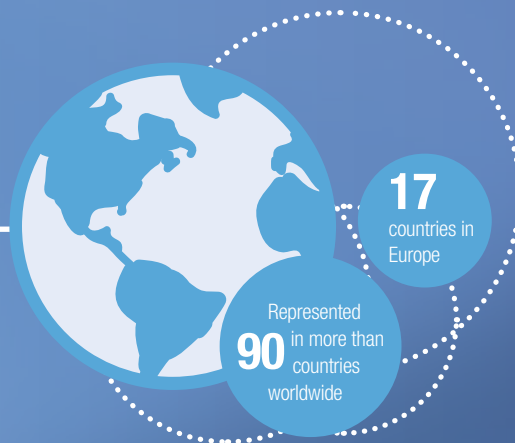
Our processes are continuously improved for reducing impact on the environment.

A high standard of Quality control on all our production

To ensure safe products;  
ISO13485



- Kuraray Noritake Dental Inc. is an affiliate of KURARAY CO., LTD. developing dental materials
- The business unit develops dental & medical materials
- 3 strategic bases covering Europe, America and China.
- 1 HQ in Japan



#### COMPLIMENTARY PRODUCT FAMILIES THAT RESTORE TEETH TO A NEAR NATURAL STATE



##### CHAIRSIDE

Bonding: CLEARFIL™

Cement: PANAVIA™

Composite Resin: CLEARFIL MAJESTY™

##### LABSIDE

Porcelain: CERABIEN™ ZR (CZR)

SUPER PORCELAIN EX-3

Zirconia: KATANA™

- Surface treatment technology for fine filler

- Dispersion and mixing technology of fine filler

#### PRODUCTION AND QUALITY CONTROL

- Fine ceramics production technology

- Easy-to-use powder production technology

- CAD/CAM advancement
- Non-metal alternative materials

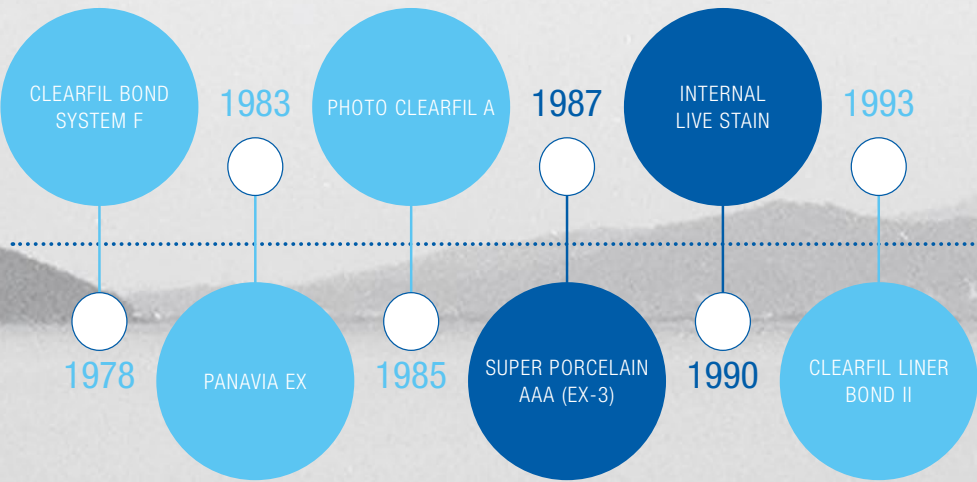


# KURARAY NORITAKE EUROPE

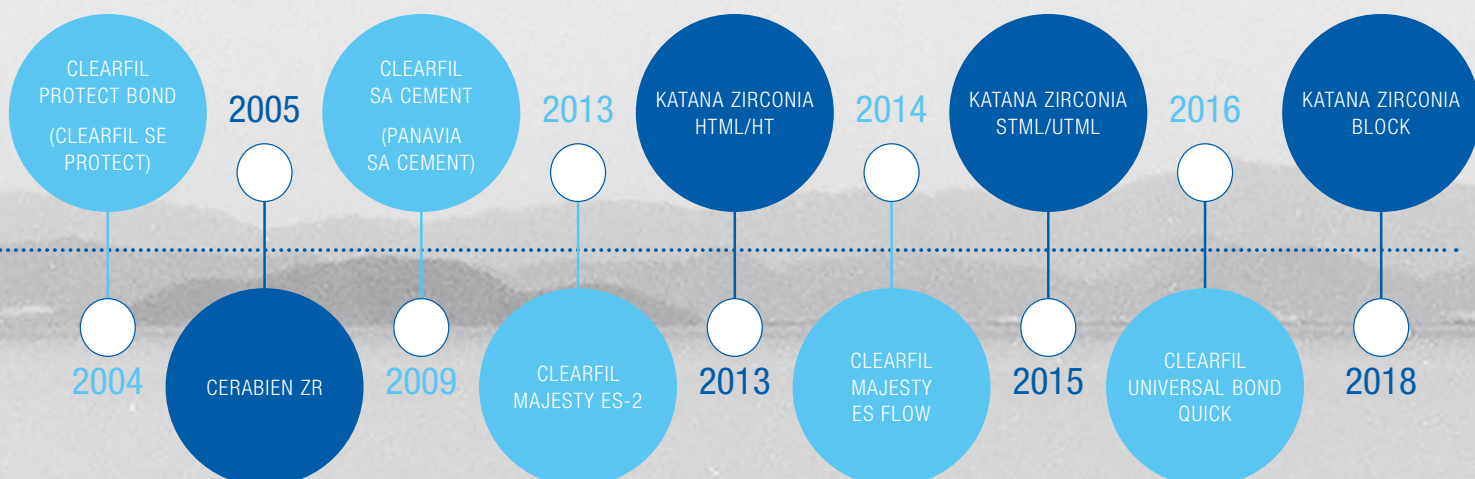
On a mission to create less complex dental procedures delivering natural beauty and lasting results.

## MILESTONES IN DENTISTRY

The great achievements that changed dentistry in the past 40 years all started within Kuraray and Noritake, Japan.







**RESEARCH & DEVELOPMENT**

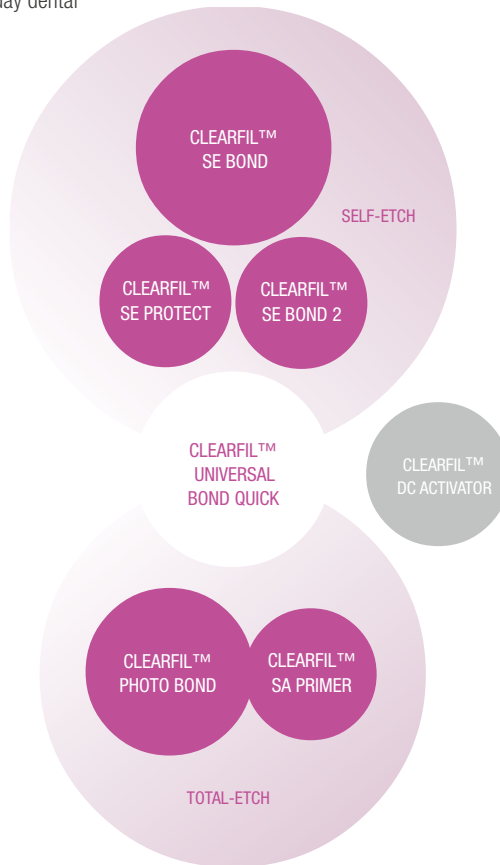
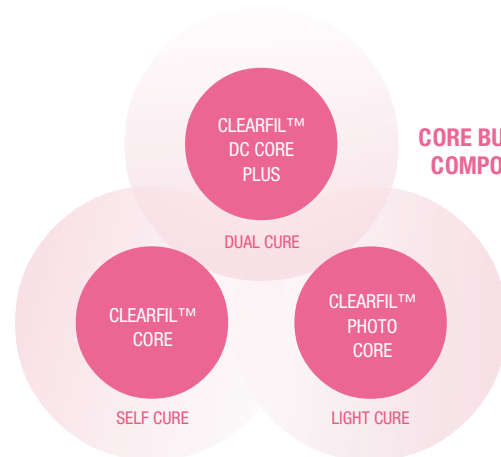
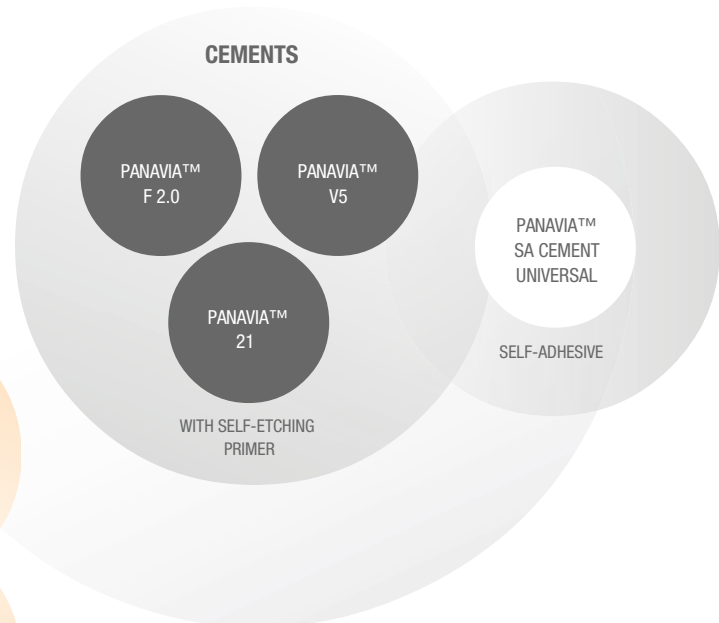
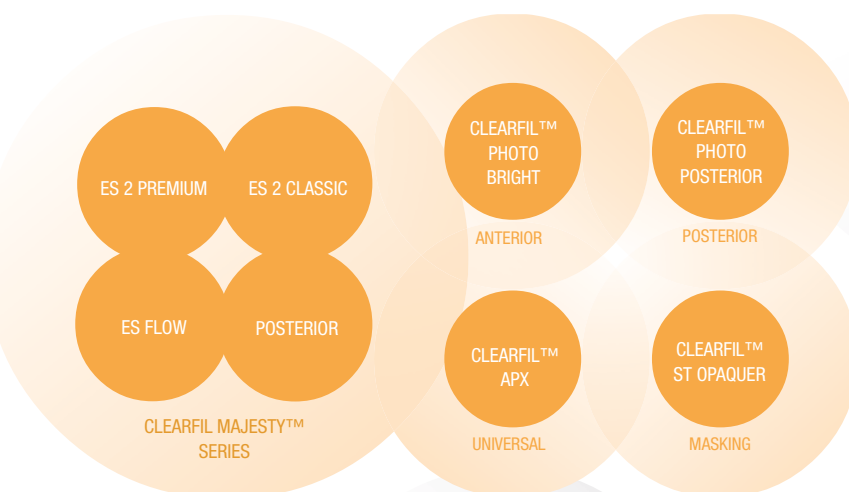
Kuraray began to develop dental products in the 1970s. Today we are recognized as an innovator in the research and development of dental products that simplify everyday dental procedures while delivering first-class, lasting results.

**MDP**

Back in 1981 we invented MDP, the adhesive monomer which achieves a durable bonding with enamel, dentin, metal and metal oxides.

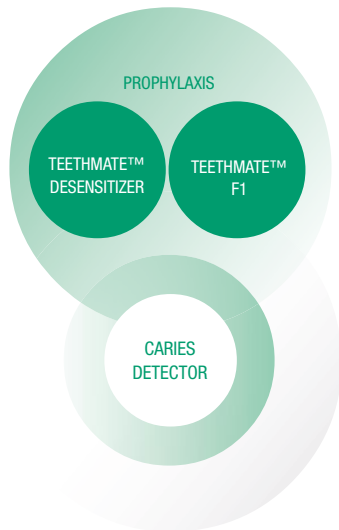
**EVIDENCE BASED**

All our product developments are based on empirical support. And we try to go further, classifying evidence by only the strongest proof coming from clinical cases, practice based research and randomized controlled trials.

**ADHESIVES****CORE BUILD-UP COMPOSITES****CEMENTS****RESTORATIVE COMPOSITES****PRETREATMENT AGENTS**

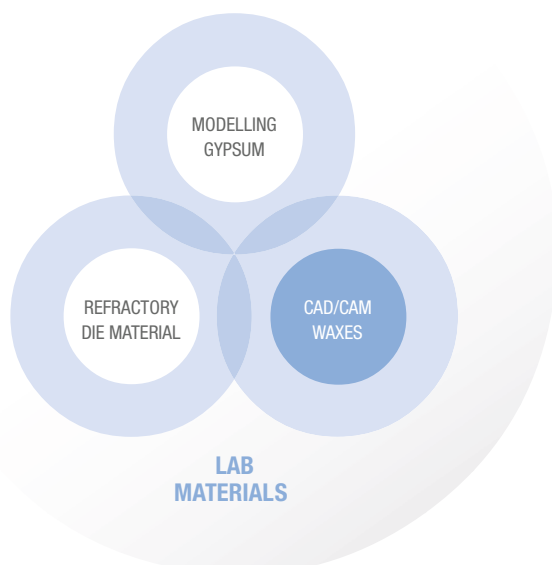
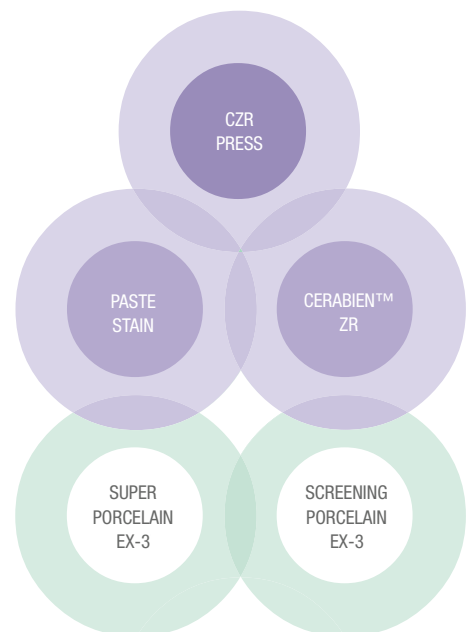
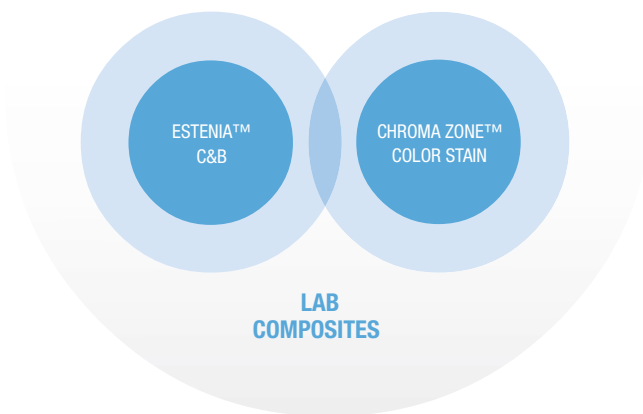
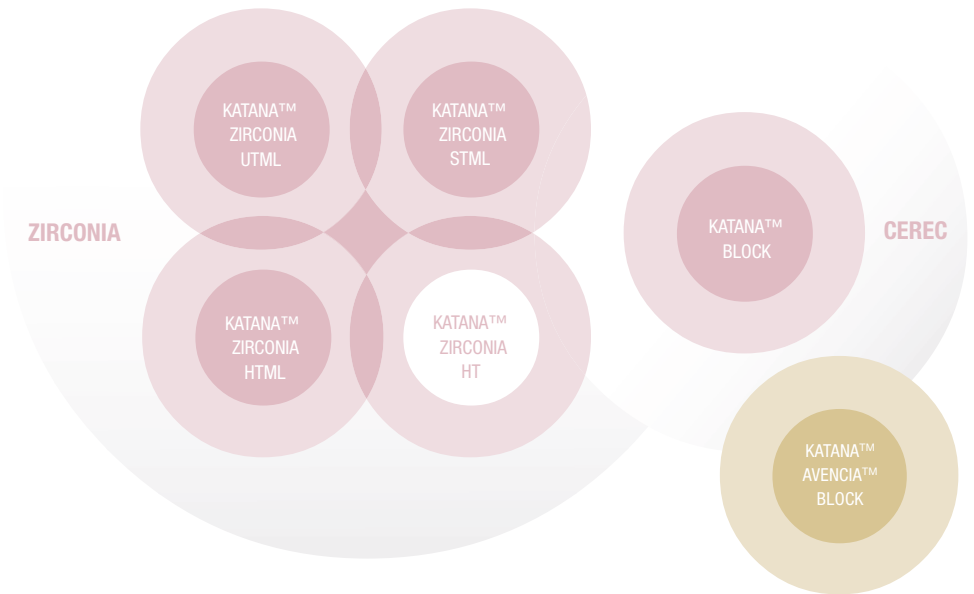
## HIGH TECH

Kuraray Inc., our mother, develops highly innovative products for many more fields of business besides dentistry. The portfolio ranges from synthetic plastics to fine chemicals and technology used for high-tech processes and finishing.



## CRAFTSMANSHIP

Kuraray Noritake ensures that the many global dental talents can be consistent in their work by delivering a high standard of quality for our full product range.



## PORCELAINS

# TABLE OF CONTENTS

## KATANA™ ZIRCONIA

<b>KATANA™ ZIRCONIA UTML</b>	<b>15</b>
Multi-Layered Zirconia with High Translucency – Perfect for Veneers and Anterior Prosthetics	
<b>KATANA™ ZIRCONIA STML</b>	<b>15</b>
Zirconia with Color and Translucency Gradient – Perfect for Full Contour Prosthetics	
<b>KATANA™ ZIRCONIA HTML</b>	<b>16</b>
Multi-Layered Colors for Fast and Natural Restorations	
<b>KATANA™ ZIRCONIA HT</b>	<b>16</b>
Monochrome High-Performance Zirconia	
<b>KATANA™ ZIRCONIA</b>	<b>16</b>
Zirconia Disc for Crowns, Bridges and Frames with Unique, Higher Opacity	
<b>KATANA™ WAX</b>	<b>16</b>
Suitable for Casting Metal and Pressing Ceramic Ingots	
<b>PANAVIA™ V5 STANDARD KIT</b>	<b>16</b>
The newest generation of PANAVIA™	

## CERABIEN™ ZR (CZR)

<b>CZR FC PASTE STAIN</b>	<b>21</b>
The Addition of a New Paste-type Surface Stain	
<b>CZR BASIC FULL KIT (63 COLORS)</b>	<b>23</b>
Full Kit with Shade Base	
<b>CZR-SS BASIC FULL KIT (63 COLORS)</b>	<b>23</b>
Full Kit with CZR PRESS Shade Base Stain	
<b>CZR MARGIN KIT (19 COLORS)</b>	<b>23</b>
Margin Porcelain Assortment	
<b>CZR ENAMEL/TRANSLUCENT COMPLETE KIT (14 COLORS)</b>	<b>23</b>
All Shades of CZR Enamel, Translucent and CCV	
<b>CZR LUSTER CCV KIT (16 COLORS)</b>	<b>23</b>
All Luster & CCV Shades including Aqua Blue & Super Gray	
<b>CZR LUSTER COMPLETE KIT</b>	<b>23</b>
All Shades of CZR Luster	
<b>CZR OPACIOUS BODY COMPLETE KIT (20 COLORS)</b>	<b>23</b>
Opacious Body Assortment	
<b>CZR EXTERNAL STAIN (ES) KIT (22 COLORS)</b>	<b>23</b>
Complete Assortment of External Stain	
<b>CZR INTERNAL STAIN (IS) COMPLETE KIT (19 COLORS)</b>	<b>24</b>
Complete Assortment of Internal Stain including Fluoro	
<b>CZR ESTHETIC WHITE KIT (11 COLORS)</b>	<b>24</b>
Assortment of Noritake Esthetic White (EW) Shades with Shade Base	
<b>CZR-SS ESTHETIC WHITE KIT (11 COLORS)</b>	<b>24</b>
Assortment of Noritake Esthetic White Shades with CZR PRESS Shade Base Stain	
<b>CZR TISSUE KIT (7 COLORS)</b>	<b>24</b>
Assortment of 7 Gingival Colors	
<b>CZR VALUE SHADE FULL KIT (55 COLORS)</b>	<b>24</b>
Value Shades including CZR PRESS Shade Base Stain	
<b>CZR VALUE SHADE BODY KIT (26 COLORS)</b>	<b>24</b>
All 26 Shades of Value Shade Body Assortment	
<b>CZR VALUE SHADE OPACIOUS BODY KIT (26 COLORS)</b>	<b>24</b>
All 26 Shades of Value Shade Opacious Body Assortment	
<b>CZR FL AND VL GLAZE</b>	<b>24</b>
Aesthetic Glossiness for Full-contour Restorations	



## CERABIEN™ ZR (CZR) PRESS

<b>CZR PRESS SHADE BASE STAIN KIT</b> (20 COLORS) Complete Assortment of Shade Base Stain	<b>29</b>
<b>CZR PRESS SS MODIFIER KIT</b> (11 COLORS) Complete Assortment of Shade Base Stain Modifier	<b>29</b>
<b>CZR PRESS INGOT-L KIT</b> (20 COLORS) Complete Assortment of Low Translucency Ingot	<b>29</b>
<b>CZR PRESS INGOT-H KIT</b> (20 COLORS) Complete Assortment of High Translucency Ingot	<b>29</b>
<b>CZR PRESS TRIAL-H KIT</b> (12 COLORS) H Ingot Trial Kit with NW0, NW0.5, A1, A2, A3 Shades	<b>29</b>
<b>CZR PRESS LF BASIC KIT</b> (19 COLORS) Complete Assortment of LF Body	<b>30</b>
<b>CZR PRESS LF EXTERNAL STAIN (ES) KIT</b> (22 COLORS) Complete Assortment of External Stain	<b>30</b>
<b>CZR PRESS LF INTERNAL STAIN (IS) COMPLETE KIT</b> (19 COLORS) Complete Assortment of Internal Stain including Fluoro	<b>30</b>
<b>CZR PRESS ESTHETIC WHITE KIT</b> (8 COLORS) Assortment of Noritake Esthetic White (EW) Shades	<b>30</b>
<b>CZR PRESS LF ESTHETIC WHITE LAYERING KIT</b> (11 COLORS) Assortment of Esthetic White (EW) Shades	<b>30</b>
<b>CZR PRESS LF LUSTER CCV KIT</b> Assortment of Luster and CCV Shades	<b>30</b>
<b>CZR PRESS LF TISSUE KIT</b> (7 COLORS) Assortment of 7 Gingival Colors	<b>30</b>

## SUPER PORCELAIN EX-3

<b>EX-3 FULL KIT PST</b> (65 COLORS) 40 Shades of EX-3 and 25 Shades of Paste Opaque	<b>35</b>
<b>EX-3 nCOLOR FULL KIT PST</b> (65 COLORS) Full Kit with nCOLOR Line-Ups / EX-3 Paste Opaque included	<b>35</b>
<b>EX-3 VALUE SHADE FULL KIT</b> (69 COLORS) Value Shades including Universal Paste Opaque & Luster	<b>35</b>
<b>EX-3 nCOLOR INTRO KIT</b> (11 COLORS) Intro Kit for Precious, Semi-Precious and Ni-Cr with Be Alloy Users	<b>35</b>
<b>EX-3 nCOLOR INTRO POBA KIT</b> (12 COLORS) Intro Kit for Ni-Cr without Be and Co-Cr Alloy Users	<b>35</b>
<b>EX-3 PASTE OPAQUE BASIC KIT</b> (17 COLORS) Basic Assortment of Paste Opaque	<b>35</b>
<b>EX-3 PASTE OPAQUE MODIFIER KIT</b> (8 COLORS) Modifier Assortment of Paste Opaque	<b>35</b>
<b>EX-3 nCOLOR PASTE OPAQUE BASIC KIT</b> (17 COLORS) Basic Assortment of Paste Opaque (nCOLOR)	<b>36</b>
<b>EX-3 UNIVERSAL PASTE OPAQUE BASIC KIT</b> (22 COLORS) Complete Assortment of Universal Paste Opaque	<b>36</b>
<b>EX-3 UNIVERSAL PASTE OPAQUE MODIFIER KIT</b> (8 COLORS) Modifier Assortment of Universal Paste Opaque	<b>36</b>
<b>EX-3 PASTE OPAQUE NP BONDER</b> (1 COLOR) Opaque Bonding Agent for Non-precious Metal	<b>36</b>
<b>EX-3 nCOLOR BODY KIT</b> (40 COLORS) Full Kit excluding Opaque (nCOLOR)	<b>36</b>
<b>EX-3 VALUE SHADE BODY KIT</b> (26 COLORS) All 26 Shades of Value Shade Body Assortment	<b>36</b>
<b>EX-3 MARGIN PORCELAIN KIT</b> (15 COLORS) Margin Porcelain Assortment	<b>36</b>
<b>EX-3 ENAMEL/TRANSLUCENT COMPLETE KIT</b> (14 COLORS) All Shades of EX-3 Enamel, Translucent and CCV	<b>37</b>
<b>EX-3 LUSTER CCV KIT</b> (16 COLORS) Luster & CCV Shades including Aqua Blue & Super Gray	<b>37</b>
<b>EX-3 LUSTER COMPLETE KIT</b> (19 COLORS) All Shades of EX-3 Luster	<b>37</b>

SUPER PORCELAIN EX-3

<b>EX-3 OPACIOUS BODY COMPLETE KIT</b> (20 COLORS) Opacious Body Assortment including OB Pale Pink	<b>37</b>
<b>EX-3 VALUE SHADE OPACIOUS BODY KIT</b> (26 COLORS) All 26 Shades of Value Shade Opacious Body Assortment	<b>37</b>
<b>EX-3 EXTERNAL STAIN (ES) KIT</b> (22 COLORS) Complete Assortment of External Stain	<b>37</b>
<b>EX-3 INTERNAL STAIN (IS) COMPLETE KIT</b> (19 COLORS) Complete Assortment of External Stain including Fluoro	<b>38</b>
<b>EX-3 ESTHETIC WHITE KIT</b> (11 COLORS) Assortment of Noritake Esthetic White (EW) Shades	<b>38</b>
<b>EX-3 TISSUE KIT</b> (7 COLORS) Assortment of 7 Tissue Colors	<b>38</b>
<b>ADDMATE KIT</b> (7 COLORS) Assortment of 7 Tissue Colors	<b>38</b>
<b>EX-3 SPEED ENAMEL</b> Developed for 2-Layers Build-up Technique	<b>38</b>
<b>SCREENING PORCELAIN KIT</b> (17 COLORS) Assortment of Masking Porcelains for PLV & PJC	<b>38</b>

LAB COMPOSITES

<b>ESTENIA™ C&amp;B</b>	<b>43</b>
<b>CROMA ZONE™ COLOR STAIN</b>	<b>44</b>

LAB MATERIALS

<b>SUPER ROCK EX</b>	<b>49</b>
<b>NORI-VEST</b>	<b>49</b>

LAB ACCESSORIES

<b>CERAMIC ACCESSORIES</b>	<b>52</b>
<b>COMPOSITE ACCESSORIES</b>	<b>55</b>

DESCRIPTION AND GUARANTEE

<b>DESCRIPTION</b>	<b>58</b>
<b>GUARANTEE</b>	<b>58</b>









## KATANA™ ZIRCONIA

KATANA™ ZIRCONIA is the trade mark of high performance zirconia discs for crowns, bridges and frames with highly innovative features.

With the KATANA™ ZIRCONIA discs you have excellent machinability, which avoids dipping during your production process. These zirconias contain advanced ceramic technology, which results in longevity. They show aesthetic translucency, exceptional shrinkage consistency on every distribution point within the disc, as well as high flexural strength.



## KATANA™ ZIRCONIA UTML

### Ultra Translucent Multi Layered

KATANA™ ZIRCONIA UTML is a high translucent disc, which meets the requirements of high-translucency level for anterior crowns and veneers. All layers are highly translucent, whereby the color saturation is reduced in the incisal area. The transparency of the natural enamel is copied and the abutment shade is absorbed.

#### KATANA™ ZIRCONIA UTML

EA1 COLLAR	T: 14 mm	#125-3302EU
EA1 COLLAR	T: 18 mm	#125-3313EU
EA2 COLLAR	T: 14 mm	#125-3332EU
EA2 COLLAR	T: 18 mm	#125-3343EU
EA3 COLLAR	T: 14 mm	#125-3362EU
EA3 COLLAR	T: 18 mm	#125-3373EU
ENW COLLAR	T: 14 mm	#125-3392EU
ENW COLLAR	T: 18 mm	#125-3403EU
A1 COLLAR	T: 14 mm	#125-3842EU
A1 COLLAR	T: 18 mm	#125-3853EU
A2 COLLAR	T: 14 mm	#125-3872EU
A2 COLLAR	T: 18 mm	#125-3883EU
A3 COLLAR	T: 14 mm	#125-3902EU
A3 COLLAR	T: 18 mm	#125-3913EU
A3.5 COLLAR	T: 14 mm	#125-3932EU
A3.5 COLLAR	T: 18 mm	#125-3943EU
A4 COLLAR	T: 14 mm	#125-3962EU
A4 COLLAR	T: 18 mm	#125-3973EU
B1 COLLAR	T: 14 mm	#125-3992EU
B1 COLLAR	T: 18 mm	#125-4003EU
B2 COLLAR	T: 14 mm	#125-4022EU
B2 COLLAR	T: 18 mm	#125-4033EU
B3 COLLAR	T: 14 mm	#125-4052EU
B3 COLLAR	T: 18 mm	#125-4063EU
B4 COLLAR	T: 14 mm	#125-4082EU
B4 COLLAR	T: 18 mm	#125-4093EU
C1 COLLAR	T: 14 mm	#125-4112EU
C1 COLLAR	T: 18 mm	#125-4123EU
C2 COLLAR	T: 14 mm	#125-4142EU
C2 COLLAR	T: 18 mm	#125-4153EU
C3 COLLAR	T: 14 mm	#125-4172EU
C3 COLLAR	T: 18 mm	#125-4183EU
C4 COLLAR	T: 14 mm	#125-4202EU
C4 COLLAR	T: 18 mm	#125-4213EU

#### KATANA™ ZIRCONIA UTML

D2 COLLAR	T: 14 mm	#125-4232EU
D2 COLLAR	T: 18 mm	#125-4243EU
D3 COLLAR	T: 14 mm	#125-4262EU
D3 COLLAR	T: 18 mm	#125-4273EU
D4 COLLAR	T: 14 mm	#125-4292EU
D4 COLLAR	T: 18 mm	#125-4303EU



## KATANA™ ZIRCONIA STML

### Super Translucent Multi Layered

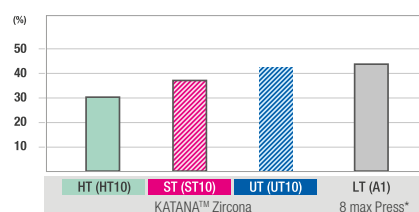
KATANA™ ZIRCONIA STML is a multi-layered zirconia disc where light is transmitted in the incisal area and blocked in the cervical area. Due to its color and translucency gradient, more opacity in the cervical area and more translucency in the incisal area are achieved.

#### KATANA™ ZIRCONIA STML

A1 COLLAR	T: 14 mm	#125-3122EU
A1 COLLAR	T: 18 mm	#125-3133EU
A1 COLLAR	T: 22 mm	#125-3144EU
A2 COLLAR	T: 14 mm	#125-3152EU
A2 COLLAR	T: 18 mm	#125-3163EU
A2 COLLAR	T: 22 mm	#125-3174EU
A3 COLLAR	T: 14 mm	#125-3182EU
A3 COLLAR	T: 18 mm	#125-3193EU
A3 COLLAR	T: 22 mm	#125-3204EU
A3.5 COLLAR	T: 14 mm	#125-3212EU
A3.5 COLLAR	T: 18 mm	#125-3223EU
A3.5 COLLAR	T: 22 mm	#125-3234EU
NW COLLAR	T: 14 mm	#125-3242EU
NW COLLAR	T: 18 mm	#125-3253EU
NW COLLAR	T: 22 mm	#125-3264EU

#### KATANA™ ZIRCONIA STML

A4 COLLAR	T: 14 mm	#125-5232EU
A4 COLLAR	T: 18 mm	#125-5243EU
A4 COLLAR	T: 22 mm	#125-5254EU
B1 COLLAR	T: 14 mm	#125-5262EU
B1 COLLAR	T: 18 mm	#125-5273EU
B1 COLLAR	T: 22 mm	#125-5284EU
B2 COLLAR	T: 14 mm	#125-5292EU
B2 COLLAR	T: 18 mm	#125-5303EU
B2 COLLAR	T: 22 mm	#125-5314EU
B3 COLLAR	T: 14 mm	#125-5322EU
B3 COLLAR	T: 18 mm	#125-5333EU
B3 COLLAR	T: 22 mm	#125-5344EU
C1 COLLAR	T: 14 mm	#125-5352EU
C1 COLLAR	T: 18 mm	#125-5363EU
C1 COLLAR	T: 22 mm	#125-5374EU
C2 COLLAR	T: 14 mm	#125-5382EU
C2 COLLAR	T: 18 mm	#125-5393EU
C2 COLLAR	T: 22 mm	#125-5404EU
C3 COLLAR	T: 14 mm	#125-5412EU
C3 COLLAR	T: 18 mm	#125-5423EU
C3 COLLAR	T: 22 mm	#125-5434EU
D2 COLLAR	T: 14 mm	#125-5442EU
D2 COLLAR	T: 18 mm	#125-5453EU
D2 COLLAR	T: 22 mm	#125-5464EU
D3 COLLAR	T: 14 mm	#125-5472EU
D3 COLLAR	T: 18 mm	#125-5483EU
D3 COLLAR	T: 22 mm	#125-5494EU



Translucency Wave length of light: 700 nm.  
Thickness of sample: 0.5 mm Source: Kuraray Noritake Dental Inc.

KATANA™ ZIRCONIA HTML  
Highly Translucent Multi Layered

Suitable for anterior and/or posterior monolithic restorations that need high strengths and where the effect of the abutment color needs to be suppressed to a minimum. It can also be used for single crown restorations and for long-span bridges. Furthermore, it is an excellent framework material when used in combination with Cerabien™ ZR porcelain.

KATANA™ ZIRCONIA HTML			
HTML A1 COLLAR	T: 14 mm		#125-6942EU
HTML A1 COLLAR	T: 18 mm		#125-6953EU
HTML A1 COLLAR	T: 22 mm		#125-6964EU
HTML A2 COLLAR	T: 14 mm		#125-6972EU
HTML A2 COLLAR	T: 18 mm		#125-6983EU
HTML A2 COLLAR	T: 22 mm		#125-6994EU
HTML A3 COLLAR	T: 14 mm		#125-7002EU
HTML A3 COLLAR	T: 18 mm		#125-7013EU
HTML A3 COLLAR	T: 22 mm		#125-7024EU
HTML A3.5 COLLAR	T: 14 mm		#125-7032EU
HTML A3.5 COLLAR	T: 18 mm		#125-7043EU
HTML A3.5 COLLAR	T: 22 mm		#125-7054EU
HTML A4 COLLAR	T: 14 mm		#125-7062EU
HTML A4 COLLAR	T: 18 mm		#125-7073EU
HTML A4 COLLAR	T: 22 mm		#125-7084EU
HTML B1 COLLAR	T: 14 mm		#125-7092EU
HTML B1 COLLAR	T: 18 mm		#125-7103EU
HTML B1 COLLAR	T: 22 mm		#125-7114EU
HTML B2 COLLAR	T: 14 mm		#125-7122EU
HTML B2 COLLAR	T: 18 mm		#125-7133EU
HTML B2 COLLAR	T: 22 mm		#125-7144EU
HTML B3 COLLAR	T: 14 mm		#125-7152EU
HTML B3 COLLAR	T: 18 mm		#125-7163EU
HTML B3 COLLAR	T: 22 mm		#125-7174EU
HTML C1 COLLAR	T: 14 mm		#125-7182EU
HTML C1 COLLAR	T: 18 mm		#125-7193EU
HTML C1 COLLAR	T: 22 mm		#125-7204EU
HTML C2 COLLAR	T: 14 mm		#125-7212EU
HTML C2 COLLAR	T: 18 mm		#125-7223EU
HTML C2 COLLAR	T: 22 mm		#125-7234EU
HTML C3 COLLAR	T: 14 mm		#125-7242EU
HTML C3 COLLAR	T: 18 mm		#125-7253EU
HTML C3 COLLAR	T: 22 mm		#125-7264EU
HTML D2 COLLAR	T: 14 mm		#125-7272EU
HTML D2 COLLAR	T: 18 mm		#125-7283EU
HTML D2 COLLAR	T: 22 mm		#125-7294EU
HTML D3 COLLAR	T: 14 mm		#125-7302EU
HTML D3 COLLAR	T: 18 mm		#125-7313EU
HTML D3 COLLAR	T: 22 mm		#125-7324EU
HTML NW COLLAR	T: 14 mm		#125-6912EU
HTML NW COLLAR	T: 18 mm		#125-6923EU
HTML NW COLLAR	T: 22 mm		#125-6934EU

KATANA™ ZIRCONIA HIGH-TRANSLUCENT  
Monochrome High-Performance Zirconia

The KATANA™ Zirconia HT disc is a high-translucent disc, which can be used ideally for highly individualized restorations. Its high aesthetic translucency fulfills all aesthetic demands. The low monoclinic transformation ensures outstanding durability to low temperature degradation. Noritake Zirconia material has superior aesthetic translucency. This is a big advantage to get a perfect result not only in Porcelain-Fused-Zirconia, but also Full-Contour-Zirconia solutions.

- High Strength (1,200MPa)
- High Translucency
- Match with CZR Internal & External Stain and CZR Glaze
- Pre-sintered and stable feature

KATANA™ ZIRCONIA HT (1 Disc)		
HT 10 STRAIGHT	T: 10 mm	#125-2111EU
HT 10 COLLAR	T: 14 mm	#125-2122EU
HT 10 COLLAR	T: 18 mm	#125-2133EU
HT 10 COLLAR	T: 22 mm	#125-2144EU
HT 10 COLLAR	T: 26 mm	#125-2155EU
HT 10 COLLAR	T: 30 mm	#125-7387EU
HT 12 STRAIGHT	T: 10 mm	#125-2251EU
HT 12 COLLAR	T: 14 mm	#125-2262EU
HT 12 COLLAR	T: 18 mm	#125-2273EU
HT 12 COLLAR	T: 22 mm	#125-2284EU
HT 12 COLLAR	T: 26 mm	#125-2295EU
HT 10 COLLAR	T: 30 mm	#125-7447EU
HT 13 STRAIGHT	T: 10 mm	#125-2301EU
HT 13 COLLAR	T: 14 mm	#125-2312EU
HT 13 COLLAR	T: 18 mm	#125-2323EU
HT 13 COLLAR	T: 22 mm	#125-2334EU
HT 13 COLLAR	T: 26 mm	#125-2345EU
HT 13 COLLAR	T: 30 mm	#125-7507EU

KATANA™ ZIRCONIA  
Zirconia Disc for Crowns, Bridges and Frames  
with Unique, Higher Opacity

With the KATANA™ ZIRCONIA disc you have appropriate hardness for milling, which avoids chipping. This zirconia has advanced ceramic technology and shows aesthetic translucency and exceptional shrinkage consistency on every distribution point within the disc and as well high flexural strength (1,200MPa). KATANA™ ZIRCONIA is a stabilized presintered zirconia with low monoclinic transformation and 98.5 mm rounded shape for open architectures.

RELATED MATERIAL  
KATANA™ WAX

Suitable for casting metal and pressing ceramic ingots

- Raw zirconia (non pre-sintered)
- Easy burn-out and very little incineration residue

KATANA™ WAX		
Disc T14	BLUE	#925-1496EU
Disc T14	GRAY	#925-1506EU
Disc T20	BLUE	#925-1516EU
Disc T20	GRAY	#925-1526EU

RECOMMENDATION  
PANAVIA™ V5

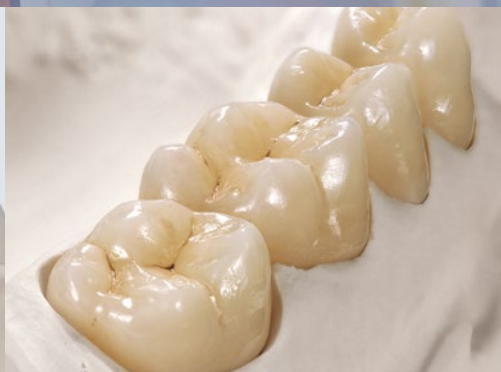
One Cement. All indications. One prime procedure. PANAVIA™ V5 is the strongest dentin bonding cement we ever developed. It is our most aesthetic cement and comes in five beautiful shades. There is no better way to durably cement your crowns, single-wing cantilever bridges and veneers. It's also the most reliable way to cement your implant abutments.

CLEARFIL™ CERAMIC PRIMER PLUS

Before you start with PANAVIA™ V5 treat the tooth with our tooth Primer; CLEARFIL™ CERAMIC PRIMER PLUS A secure adhesion to ceramic, hybrid ceramics, composites and metals is guaranteed with our universal primer which suits all your needs.

ORDER OUR PANAVIA™ V5 STANDARD KIT:		
Universal (A2)	Content	#3601-EU
Clear	Syringe 4.6 ml, Tooth Primer 2 ml, CLEARFIL™ CERAMIC PRIMER PLUS 2 ml, 1 K-ETCHANT Syringe 3 ml, 15 pcs Mixing Tip, 5 pcs Endo Tip, 50 pcs Applicator Brush, Mixing Dish, 20 pcs Needle Tip	#3602-EU









**CERABIEN™ ZR (CZR)**

## CERABIEN™ ZR (CZR) FC PASTE STAIN

The addition of a new paste-type FC Paste Stain (a surface stain) to the CERABIEN™ ZR (CZR) line allows the easy characterization of full-zirconia restorations. FC Paste Stain is available in a total of 27 shades, for the reproduction of a wide variety of shades.

The full complement of blue and gray shades (Light Gray, Dark Gray, Grayish Blue, & Blue) makes the easy reproduction of blue-grayish transparency effects for incisal area possible. Two types of glaze (Glaze & Clear Glaze) make it easier to control the appearance of transparency across the entire crown.



# COLOR COMPOSITION

## FC PASTE STAIN COLOR COMPOSITION LIST

Translucent
Glaze
Clear Glaze
Enamel
Light Gray
Dark Gray
Grayish Blue
Blue
Dentin
Cervical 1
Cervical 2
Cervical 3
A+
B+
C+
D+
Enhancement
White
Mamelon Orange 1
Mamelon Orange 2
Earth Brown
Reddish Brown
Adjustment
Value
Black
Green 1
Green 2
Yellow
Salmon Pink
Pink
Red
Fluoro



FC Paste Stain Clear Glaze



FC Paste Stain Cervical 1

# CERABIEN™ ZR (CZR) FC PASTE STAIN

## CERABIEN™ ZR (CZR) FC PASTE STAIN

CZR FC PASTE STAIN FULL KIT	#104-5590EU
CZR FC PASTE STAIN BLACK (3 g)	#104-5601EU
CZR FC PASTE STAIN LIGHT GRAY (3 g)	#104-5611EU
CZR FC PASTE STAIN DARK GRAY (3 g)	#104-5621EU
CZR FC PASTE STAIN GRAYISH BLUE (3 g)	#104-5631EU
CZR FC PASTE STAIN BLUE (3 g)	#104-5641EU
CZR FC PASTE STAIN GREEN1 (3 g)	#104-5651EU
CZR FC PASTE STAIN GREEN2 (3 g)	#104-5661EU
CZR FC PASTE STAIN YELLOW (3 g)	#104-5671EU
CZR FC PASTE STAIN MAMELON ORANGE1 (3 g)	#104-5681EU
CZR FC PASTE STAIN MAMELON ORANGE2 (3 g)	#104-5691EU
CZR FC PASTE STAIN CERVICAL1 (3 g)	#104-5701EU
CZR FC PASTE STAIN CERVICAL2 (3 g)	#104-5711EU
CZR FC PASTE STAIN CERVICAL3 (3 g)	#104-5721EU
CZR FC PASTE STAIN EARTH BROWN (3 g)	#104-5731EU
CZR FC PASTE STAIN REDDISH BROWN (3 g)	#104-5741EU
CZR FC PASTE STAIN SALMON PINK (3 g)	#104-5751EU
CZR FC PASTE STAIN PINK (3 g)	#104-5761EU
CZR FC PASTE STAIN RED (3 g)	#104-5771EU
CZR FC PASTE STAIN A+ (3 g)	#104-5781EU
CZR FC PASTE STAIN B+ (3 g)	#104-5791EU
CZR FC PASTE STAIN C+ (3 g)	#104-5801EU
CZR FC PASTE STAIN D+ (3 g)	#104-5811EU
CZR FC PASTE STAIN WHITE (3 g)	#104-5821EU
CZR FC PASTE STAIN VALUE (3 g)	#104-5831EU
CZR FC PASTE STAIN FLUORO (3 g)	#104-5841EU
CZR FC PASTE STAIN GLAZE (5 g)	#104-5851EU
CZR FC PASTE STAIN CLEAR GLAZE (5 g)	#104-5861EU
CZR FC PASTE STAIN BASIC KIT	#104-5870EU
CZR FC PASTE STAIN COLOR GUIDE	#211-2389EU



CZR FC Paste Stain Full Kit



CZR FC Paste Stain Basic Kit

# OPTIMIZED FOR FULL-ZIRCONIA RESTORATIONS

Aesthetic full-zirconia restorations can be fabricated efficiently by combining FC Paste Stain with KATANA™ Zirconia UTML, STML or HTML.\*



\*FC Paste Stain can be used on the surfaces of restorations where CERABIEN™ ZR (CZR), CZR PRESS, or CZR PRESS Ingot is layered on KATANA™ Zirconia. For detailed information, please refer to the CERABIEN™ ZR (CZR) Instructions for Use or the CERABIEN™ ZR (CZR) FC Paste Stain Technical Manual.

## CERABIEN™ ZR (CZR)

CZR (CERABIEN™ ZR) is a porcelain system for making all ceramic crowns in use with zirconia frameworks. Single crown made from CZR with zirconia can be used in the posterior as well as anterior due to its extremely high flexural strength. The combination of CZR and zirconia will give you enhanced aesthetics and fit with maximum strength for an overall superior restoration.



## CZR BASIC FULL KIT

### Full Kit with Shade Base

CZR BASIC FULL KIT is an excellent kit composed of basic colors for all ceramic crowns and bridges, using Zirconia frameworks. Shade Base Stains are included instead of Shade Base porcelains.

CZR BASIC FULL KIT (630 g)		#104-1740EU
SB (POWDER)	10 g each	18 colors
BODY	10 g each	18 colors
ENAMEL	10 g each	4 colors
TRANSLUCENT	10 g each	4 colors
CERVICAL	10 g each	4 colors
MODIFIER	10 g each	13 colors
ADD-ON	10 g each	2 colors

## CZR-SS BASIC FULL KIT

### Full Kit with CZR PRESS Shade Base Stain

CZR BASIC FULL KIT is an excellent kit composed of basic colors for all ceramic crowns and bridges, using Zirconia frameworks. CZR-SS BASIC FULL KIT has the same shade selection as CZR BASIC FULL KIT. Shade Base Stains are included instead of Shade Base porcelains.

SS BASIC FULL KIT (504 g)		#104-1760EU
SS (STAIN)	3 g each	18 colors
BODY	10 g each	18 colors
ENAMEL	10 g each	4 colors
TRANSLUCENT	10 g each	4 colors
CERVICAL	10 g each	4 colors
MODIFIER	10 g each	13 colors
ADD-ON	10 g each	2 colors

## CZR MARGIN KIT

### Margin Porcelain Assortment

In addition to ordinary usage, MARGIN PORCELAIN can be used to correct a chip in the Zirconia framework. The use of MAGIC FORMER as forming liquid is highly recommended.

MARGIN KIT (190 g)		#104-1770EU
BASIC SHADE:	10 g each	14 colors
SPECIAL COLOR	10 g each	3 colors
DILUTION POWDER (MDL)	10 g each	1 color
RETOUCHING POWDER	10 g each	1 color

## CZR ENAMEL / TRANSLUCENT COMPLETE KIT

### All Shades of CZR Enamel, Translucent and CCV

LUSTER PORCELAIN is designed to replicate the exact subtle complexities in shades and texture of natural enamel. It contains extremely fine particles, and it accurately reproduces the natural opalescence of enamel.

E/T COMPLETE KIT (140 g)		#104-1780EU
ENAMEL	10 g each	5 colors
TRANSLUCENT	10 g each	5 colors
CERVICAL	10 g each	4 colors

## CZR LUSTER CCV KIT

### All Luster & CCV Shades including Aqua Blue & Super Gray

LUSTER PORCELAIN reproduces natural enamel in both surface features and color. LUSTER PORCELAIN reproduces the fine surface structure and luster of natural teeth. A unique combination of fine surface particles produces a selective reflection of light that results in the same opalescence seen in natural teeth.

LUSTER CCV KIT (160 g)			#104-1790EU
10 g each	LTO	LT1	T Blue
	AQUA BLUE 1	AQUA BLUE 2	LT NATURAL
	LT SUPER GRAY	CREAMY ENAMEL	SUN BRIGHT
	INCISAL AUREOLA	CREAMY WHITE	LT YELLOW
	CCV-1	CCV-2	CCV-3
	CCV-4		



## CZR LUSTER COMPLETE KIT

### All Shades of CZR Luster

LUSTER PORCELAIN is designed to replicate the exact subtle complexities in shades and texture of natural enamel. It contains extremely fine particles, and it accurately reproduces the natural opalescence of enamel.

LUSTER COMPLETE KIT (190 g)		#104-1800EU
LUSTER	10 g each	19 colors

## CZR OPACIOUS BODY COMPLETE KIT

### Opacious Body Assortment

OPACIOUS BODY can be used to achieve delicate colors and to control translucency.

OB COMPLETE KIT (200 g)		#104-1810EU
BASIC SHADE	10 g each	16 colors
SPECIAL COLOR	10 g each	OB White
SPECIAL COLOR	10 g each	OB Orange
SPECIAL COLOR	10 g each	OB Pale Pink
SPECIAL COLOR	10 g each	OBE

## CZR EXTERNAL STAIN (ES) KIT

### Complete Assortment of External Stain

EXTERNAL STAIN reproduces the great variety of color shades observed on the surface of natural teeth.

EXTERNAL STAIN KIT (73 g)		#104-1820EU
PURE WHITE	3 g each	
GRAY	3 g each	
BLACK	3 g each	
BLUE	3 g each	
GREEN 1	3 g each	
GREEN 2	3 g each	
YELLOW	3 g each	
ORANGE 1	3 g each	
ORANGE 2	3 g each	
CV-1	3 g each	
CV-2	3 g each	
CV-3	3 g each	
EARTH BROWN	3 g each	
REDDISH BROWN	3 g each	
SALMON PINK	3 g each	
PINK	3 g each	
RED	3 g each	
A+	3 g each	
B+	3 g each	
C+	3 g each	
D+	3 g each	
GLAZE	10 g each	1 color
ES LIQUID	10 ml	1 bottle



CZR INTERNAL STAIN (IS) COMPLETE KIT  
Complete Assortment of Internal Stain  
including Fluoro

With INTERNAL STAIN it is possible to replicate many of the most intricate three-dimensional patterns of shade variation found in natural teeth. IS FLUORO is added to the kit.

INTERNAL STAIN COMPLETE KIT (57 g)		#104-1840EU
WHITE	3 g each	
INCISAL BLUE 1	3 g each	
INCISAL BLUE 2	3 g each	
MAMELON ORANGE 1	3 g each	
MAMELON ORANGE 2	3 g each	
CV-1	3 g each	
CV-2	3 g each	
CV-3	3 g each	
EARTH BROWN	3 g each	
REDDISH BROWN	3 g each	
FLUORO	3 g each	
SALMON PINK	3 g each	
RED	3 g each	
A+	3 g each	
B+	3 g each	
C+	3 g each	
D+	3 g each	
GRAY	3 g each	
BRIGHT (DILUTION)	3 g each	1 color
IS LIQUID	10 ml	1 bottle

CZR ESTHETIC WHITE KIT  
Assortment of Noritake Esthetic White (EW)  
Shades with Shade Base

CZR ESTHETIC WHITE KIT is for creating whiter shades rather than NW shades. It is not only pure bleaching shades but also natural and beautiful white shades.

ESTHETIC WHITE KIT (110 g)		#104-1870EU
SP (POWDER)	3 g each	SB WHITE, SBB1/ SS WHITE, SSB1
BODY	3 g each	EWOOB, EWOB, EWB, EWYB
ENAMEL	3 g each	SILKY E1, SILKY E2
LUSTER TRANSLUCENT	3 g each	ELT1, ELT2, ELT3

CZR-SS ESTHETIC WHITE KIT  
Assortment of Noritake Esthetic White (EW)  
Shades with CZR PRESS Shade Base Stain

CZR ESTHETIC WHITE KIT is for creating whiter shades than NW shades. It is not only pure bleaching rather shades but also natural and beautiful white shades. CZR-SS ESTHETIC WHITE KIT has a Shade Base stain (SSB1) instead of Shade Base SBB1.

SS ESTHETIC WHITE KIT (96 g)		#104-1880EU
SS (STAIN)	3 g each	SB WHITE, SBB1/ SS WHITE, SSB1
BODY	3 g each	EWOOB, EWOB, EWB, EWYB
ENAMEL	3 g each	SILKY E1, SILKY E2
LUSTER TRANSLUCENT	3 g each	ELT1, ELT2, ELT3

CZR TISSUE KIT  
Assortment of 7 Gingival Colors

CZR TISSUE KIT is a complete kit of 7 Noritake Tissue Colors. All colors are very useful for implant work.

TISSUE KIT (70 g)		#104-1890EU
Tissue	10 g each	TISSUE 1-7

CZR VALUE SHADE FULL KIT  
Value Shades including CZR PRESS Shade  
Base Stain

Noritake Value Shades are additional shades that expand the existing EX-3 and CZR selection of Body and Opacious Body porcelain powders to include the VITA 3D-Master® shades. With the Noritake Value Shades you will discover a simple, quick, and precise solution to completing VITA 3D-Master® shade restorations. CZR VALUE SHADE FULL KIT is an excellent kit composed of basic colors for all ceramic crowns and bridges, using Zirconia frameworks.

VALUE SHADE FULL KIT (480 g)		#104-5490EU
SS (STAIN)	3 g each	10 colors
BODY	10 g each	28 colors
ENAMEL	10 g each	3 colors
TRANSLUCENT	10 g each	3 colors
ADD-ON	10 g each	2 colors
LUSTER	10 g each	9 colors

CZR VALUE SHADE BODY KIT  
All 26 Shades of Value Shade Body Assortment

CZR VALUE SHADE BODY KIT is an ideal assortment of basic shades.

VALUE SHADE BODY KIT (260 g)		#104-5500EU
OPACIOUS	1110B	1120B 2015B
BODY:	2025B	2110B 2120B
10 g each	2130B	2215B 2225B
	3015B	3025B 3110B
	3120B	3130B 3215B
	3225B	4015B 4025B
	4110B	4120B 4130B
	4215B	4225B 5110B
	5120B	5130B NWOB
	NWO.58	

CZR VALUE SHADE OPACIOUS BODY KIT  
All 26 Shades of Value Shade Opacious Body  
Assortment

OPACIOUS BODY can be used to achieve delicate colors and to control translucency.

VALUE SHADE OPACIOUS BODY KIT (260 g)		#104-5510EU
OPACIOUS	OB1110	OB1120 OB2015
BODY:	OB2025	OB2110 OB2120
10 g each	OB2130	OB2215 OB2225
	OB3015	OB3025 OB3110
	OB3120	OB3130 OB3215
	OB3225	OB4015 OB4025
	OB4110	OB4120 OB4130
	OB4215	OB4225 OB5110
	OB5120	OB5130

RELATED MATERIALS  
CZR FL GLAZE (INCLUDING FLUORESCENCE)  
CZR VC GLAZE (FOR VALUE CONTROL)

These glaze powders are recommended to achieve aesthetic glossiness for full-contour restorations.

CZR FL AND VC GLAZE		
CZR ES FL GLAZE	10 g each	104-5571EU
CZR ES VC GLAZE	10 g each	104-5581EU

**“THE COMBINATION OF CZR AND  
ZIRCONIA WILL GIVE YOU ENHANCED  
AESTHETICS AND FIT WITH MAXIMUM  
STRENGTH FOR AN OVERALL  
SUPERIOR RESTORATION.”**



**CERABIEN™ ZR (CZR) PRESS**

## CERABIEN™ ZR (CZR) PRESS

CZR PRESS technology is realized by the two time-proven technologies, oxide ceramics and pressable ceramics. This synergy combines the strength fracture toughness and cementability of pure zirconia copings, with the marginal integrity, versatility and beauty of pressable ceramics.





### CZR PRESS SHADE BASE STAIN KIT

#### Complete Assortment of Shade Base Stain

CZR PRESS SHADE BASE STAIN KIT is a kind of stain to make the basic shade color of zirconia framework before pressing CZR PRESS INGOT. The basic shade color can be recreated thinly, transparently and naturally with the simple stain technique.

SHADE BASE STAIN KIT (60 g)		#107-0010EU
BASIC SHADE	3 g each	20 colors
IS LIQUID	10 ml	1 bottle

### CZR PRESS SS MODIFIER KIT

#### Complete Assortment of Shade Base Stain Modifier

CZR PRESS SS MODIFIER KIT is an assortment of all available SS Modifiers. It can be mixed with CZR PRESS Shade Base Stain to customize the shade or may be applied alone for minor modifications.

SS MODIFIER KIT (33 g)		#107-0020EU
A+	3 g each	
B+	3 g each	
C+	3 g each	
D+	3 g each	
FLUORO	3 g each	
CV ORANGE	3 g each	
INCISAL BLUE 1	3 g each	
INCISAL BLUE 2	3 g each	
GRAY	3 g each	
SALMON PINK	3 g each	
EARTH BROWN	3 g each	
IS LIQUID	10 ml	1 bottle

### CZR PRESS INGOT-L KIT

#### Complete Assortment of Low Translucency Ingot

CZR PRESS INGOT-L KIT is a low translucent type of press ceramic for zirconia frameworks. It is developed to recreate the margin area precisely by pressing INGOT-L. INGOT-L is a press ceramic used with the layering technique. After INGOT-L is pressed, the crown can be made by using CZR TRANSLUCENT PORCELAIN or CZR LUSTER POR-CELAIN. A single anterior crown can be made without frameworks using CZR PRESS LF porcelain.

INGOT-L KIT (200 g)		# 107-0030EU
BASIC SHADE	10 g each	20 colors
PLUNGER		1 set

### CZR PRESS INGOT-H KIT

#### Complete Assortment of High Translucency Ingot

CCZR PRESS INGOT-H KIT is a high translucent type of press ceramic for zirconia framework. It is developed to recreate the margin area precisely by pressing INGOT-H. INGOT-H is a press ceramic used with the stain technique. After INGOT-H is pressed, the crown can be made by using CZR EXTERNAL STAIN or CZR PRESS GLAZE POWDER. CZR PRESS LF porcelain can be also used after pressing.

INGOT-H KIT (200 g)		#107-0040EU
BASIC SHADE	10 g each	20 colors
PLUNGER		1 set



### CZR PRESS TRIAL-H KIT

#### H Ingot Trial Kit with NW0, NW0.5, A1, A2, A3 Shades

CZR PRESS TRIAL-H KIT is a necessary kit for using INGOT-H, including SHADE BASE STAIN, INGOT-H, CZR PRESS GLAZE, CZR ES A+ , and PLUNGER. It contains 5 shade colors, which are A1, A2, A3, NW0, and NW0.5. The beginning user of CZR PRESS should also prepare for press investments, RING/FORMER, IS LIQUID, and ES LIQUID.

TRIAL-H KIT (78 g)		#107-0060EU
INGOT-H	10 g each	5 colors
SB STAIN	3 g each	5 colors
CZR ES A+	3 g each	1 color
CZR PRESS GLAZE	10 g each	1 color
PLUNGER		1 set



CZR PRESS LF BASIC KIT  
Complete Assortment of LF Body

CZR PRESS LF BASIC KIT is a basic assortment for layering of stand-alone CZR PRESS crowns. It also can be used with normal CZR layering. 7 LF BODY shades are very useful for minor corrections of pressed body shape.

LF BASIC KIT (190 g)		#107-0090EU
BODY	10 g each	HA1B, HA3B, HA4B, HB2B, HC2B, HD2B HNWOB
ENAMEL	10 g each	E1, E2, E3
TRANSLUCENT	10 g each	TX, T0, T1, T2
MODIFIER	10 g each	MAMELON 1-2
ADD-ON	10 g each	AD-T, AD-B
MARGIN	10 g each	MRP

CZR PRESS LF EXTERNAL STAIN (ES) KIT  
Complete Assortment of External Stain

CZR PRESS LF EXTERNAL STAIN KIT is a set of low fusing stains for CZR PRESS LF porcelain. It is necessary to use this stain after CZR PRESS LF layering. Baking temperature of this stain is 840°C.

LF EXTERNAL STAIN KIT (73 g)		#107-0100EU
PURE WHITE	3 g each	
GRAY	3 g each	
BLACK	3 g each	
BLUE	3 g each	
GREEN 1	3 g each	
GREEN 2	3 g each	
YELLOW	3 g each	
ORANGE 1	3 g each	
ORANGE 2	3 g each	
CV-1	3 g each	
CV-2	3 g each	
CV-3	3 g each	
EARTH BROWN	3 g each	
REDDISH BROWN	3 g each	
SALMON PINK	3 g each	
PINK	3 g each	
RED	3 g each	
A+	3 g each	
B+	3 g each	
C+	3 g each	
D+	3 g each	
GLAZE	10 g	1 color
ES LIQUID	10 ml	1 bottle

CZR PRESS LF INTERNAL STAIN (IS)  
COMPLETE KIT  
Complete Assortment of Internal Stain including Fluoro

CZR PRESS LF INTERNAL STAIN KIT is a set of low fusing stains for CZR PRESS LF porcelain. It is necessary to use this stain before CZR PRESS LF layering. Baking temperature of this stain is 800°C.

LF IS COMPLETE KIT (57 g)		#107-0120EU
WHITE	3 g each	
INCISAL BLUE 1	3 g each	
INCISAL BLUE 2	3 g each	
MAMELON ORANGE 1	3 g each	
MAMELON ORANGE 2	3 g each	
CV-1	3 g each	
CV-2	3 g each	
CV-3	3 g each	
EARTH BROWN	3 g each	
REDDISH BROWN	3 g each	
GRAY	3 g each	
FLUORO	3 g each	
SALMON PINK	3 g each	
RED	3 g each	
A+	3 g each	
B+	3 g each	
C+	3 g each	
D+	3 g each	
BRIGHT	3 g each	1 color
IS LIQUID	10 ml	1 bottle

CZR PRESS ESTHETIC WHITE KIT  
Assortment of Noritake Esthetic White (EW) Shades

CZR PRESS ESTHETIC WHITE KIT is developed to create whiter shades than NW shades with press technique. It contains not only pure bleaching shades but also natural and beautiful white shades.

ESTHETIC WHITE KIT (59 g)		#107-0130EU
SHADE BASE STAIN	3 g each	SS WHITE, SSB1
ESTHETIC WHITE INGOT	10 g each	EWOD, EWO, EW, EWY
EXTERNAL STAIN	3 g	B+
GLAZE	10 g	CZR PRESS GLAZE

CZR PRESS LF ESTHETIC WHITE  
LAYERING KIT  
Assortment of Esthetic White (EW) Shades

CZR PRESS LF ESTHETIC WHITE LAYERING KIT is developed to create whiter shades than NW shades. It contains not only pure bleaching shades but also natural and beautiful white shades.

EW LAYERING KIT (89 g)		#107-0140EU
SHADE BASE STAIN	3 g each	SS WHITE, SSB1
BODY	10 g each	EW00B, EW0B, EWB, EWYB
EXTERNAL STAIN	3 g	B+
GLAZE	10 g	CZR GLAZE

CZR PRESS LF LUSTER CCV KIT  
Luster & CCV Shades including Aqua Blue & Super Gray

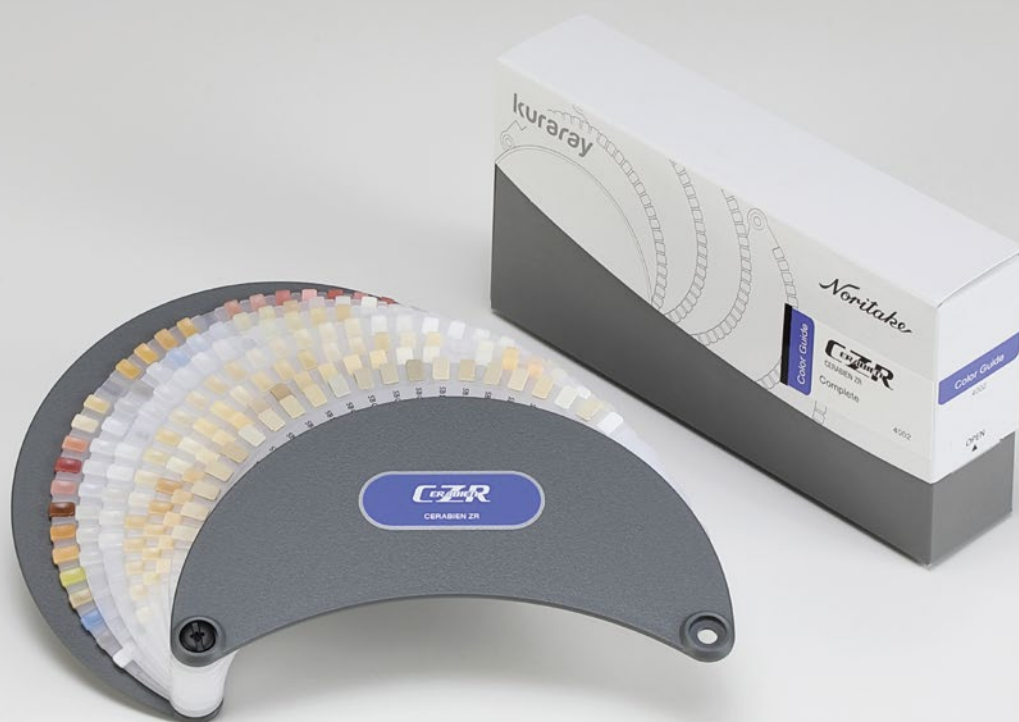
CZR PRESS LF LUSTER/CCV KIT is an assortment of all available CZR PRESS LF LUSTER and CCV porcelains. LUSTER can produce beautiful surface textures with natural opalescence. CCV is very effective when applying on cervical area.

CZR PRESS LF LUSTER CCV KIT (160 g)		#107-0150EU
10 g each	LT0	LT1 T BLUE
	AQUA BLUE 1	AQUA BLUE 2 LT NATURAL
	LT SUPER GRAY	CREAMY ENAMEL SUN BRIGHT
	INCISAL AUREOLA	CREAMY WHITE LT YELLOW
	CCV-1	CCV-2 CCV-3
	CCV-4	

CZR PRESS LF TISSUE KIT  
Assortment of 7 Gingival Colors

CZR PRESS LF TISSUE KIT is a complete kit of 7 Noritake Tissue colors. All colors are very useful for implant work.

LF TISSUE KIT (70 g)		#107-0160EU
TISSUE	10 g each	TISSUE 1 - 7







## SUPER PORCELAIN EX-3

DENTAL PORCELAIN for Metal Framework Restorations.

The fabrication procedures for NORITAKE SUPER PORCELAIN EX-3 are remarkably easy. Its outstanding features are made possible because of its very fine particle size. NORITAKE SUPER PORCELAIN EX-3 is superior to other dental porcelains because its coefficient of thermal expansion (CTE) remains stable during repeated bakings. Therefore, when making a long span bridge, each unit may be precisely customized with repeated baking of the entire span with minimal risk of cracking. It is compatible with precious, semi-precious, non-precious and silverfree alloys for metal-ceramic protheses. Its fluorescence is ideal and it is highly resistant to silver-induced greening. This combination of features makes NORITAKE SUPER PORCELAIN EX-3 an ideal choice for porcelain restorations.





### EX-3 FULL KIT PST

#### 40 Shades of EX-3 and 25 Shades of Paste Opaque

The fabrication procedures for NORITAKE SUPER PORCELAIN EX-3 are remarkably easy. Its outstanding features are made possible because of its very fine particle size. NORITAKE SUPER PORCELAIN EX-3 is superior to other dental porcelains because its coefficient of thermal expansion (CTE) remains stable during repeated baking. Therefore, when making a long span bridge, each unit may be precisely customized with repeated baking of the entire span with minimal risk of cracking. It is compatible with precious, semi-precious, non-precious and silver free alloys for metal-ceramic prostheses. Its fluorescence is ideal and it is highly resistant to silver-induced greening. This combination of features makes NORITAKE SUPER PORCELAIN EX-3 an ideal choice for porcelain restorations

FULL KIT PST (526 g)		#102-0020EU
Paste Opaque	6 g each	17 colors
Paste Opaque	3 g each	8 colors
Cervical	10 g each	4 colors
Enamel	10 g each	3 colors
Translucent	10 g each	4 colors
Body	10 g each	16 colors
Modifier	10 g each	11 colors
ADD-ON	10 g each	2 colors
EX-3 FORMING LIQUID	10 ml	1 colors
EX-3 PO LIQUID	10 ml	1 colors

### EX-3 nCOLOR FULL KIT PST

#### Full Kit with nCOLOR Line-ups / EX-3 Paste Opaque included

The fabrication procedures for NORITAKE SUPER PORCELAIN EX-3 are remarkably easy. Its outstanding features are made possible because of its very fine particle size. NORITAKE SUPER PORCELAIN EX-3 is superior to other dental porcelains because its coefficient of thermal expansion (CTE) remains stable during repeated bakings. Therefore, when making a long span bridge, each unit may be precisely customized with repeated baking of the entire span with minimal risk of cracking. It is compatible with precious, semi-precious, non-precious and silverfree alloys for metal-ceramic protheses. Its fluorescence is ideal and it is highly resistant to silver-induced greening. This combination of features makes NORITAKE SUPER PORCELAIN EX-3 an ideal choice for porcelain restorations.

nCOLOR FULL KIT PST (526 g)		#102-0030EU
PASTE OPAQUE	6 g each	16 colors
BASE PASTE (POBA)	6 g each	1 color
PASTE OPAQUE MODIFIER	3 g each	8 colors
BODY	10 g each	16 colors
ENAMEL	10 g each	3 colors
TRANSLUCENT	10 g each	4 colors
CERVICAL	10 g each	4 colors
ADD-ON	10 g each	2 colors
MODIFIER	10 g each	11 colors
PASTE OPAQUE LIQUID	10 ml	1 bottle
FORMING LIQUID	20 ml	1 bottle
PASTE OPAQUE BRUSH		2 pieces
MODIFIER BRUSH		1 piece

### EX-3 VALUE SHADE FULL KIT

#### Value Shades including Universal Paste Opaque & Luster

Noritake Value Shades are additional shades that expand the existing EX-3 and CZR selection of Body and Opacious Body porcelain powders to include the VITA 3D-Master® shades. With the Noritake Value Shades you will discover a simple, quick, and precise solution to completing VITA 3D-Master® shade restorations.

VALUE SHADE FULL KIT (582g)		#102-0040EU
UNIVERSAL PASTE OPAQUE	6 g each	13 colors
UNIVERSAL PASTE OPAQUE MODIFIER	3 g each	8 colors
BODY	10 g each	28 colors
ENAMEL	10 g each	3 colors
TRANSLUCENT	10 g each	3 colors
LUSTER	10 g each	12 colors
ADD-ON	10 g each	2 colors
PASTE OPAQUE BRUSH		1 piece
MODIFIER BRUSH		1 piece

### EX-3 nCOLOR INTRO KIT

#### Intro Kit for Precious, Semi-Precious and Ni-Cr with Be Alloy Users

EX-3 nCOLOR INTRO KIT is a good assortment kit for trial of EX-3. EX-3 nCOLOR INTRO KIT for Precious, Semi-Precious and Ni-Cr with Be alloy users.

nCOLOR INTRO KIT (102 g)		#102-0050EU
PASTE OPAQUE	6 g each	POnA2, POnA3, (POBA)
BODY	10 g each	nA2B, nA3B
ENAMEL	10 g each	E2, E3
TRANSLUCENT / OTHERS:	10 g each	TX, LT1, CREAMY, ENAMEL, CCV1, AD-T
FORMING LIQUID	10 ml	1 bottle
PASTE OPAQUE BRUSH		1 piece

### EX-3 nCOLOR INTRO POBA KIT

#### Intro Kit for Ni-Cr without Be and Co-Cr Alloy Users

EX-3 nCOLOR INTRO KIT is a good assortment kit for trial of EX-3. EX-3 nCOLOR INTRO KIT POBA for Ni-Cr without Be, Co-Cr and semi-precious with Cu alloy users.

nCOLOR INTRO POBA KIT (108 g)		#102-0060EU
PASTE OPAQUE	6 g each	POnA2, POnA3, (POBA)
BODY	10 g each	nA2B, nA3B
ENAMEL	10 g each	E2, E3
TRANSLUCENT / OTHERS	10 g each	TX, LT1, CREAMY, ENAMEL, CCV1, AD-T
FORMING LIQUID	10 ml	1 bottle
PASTE OPAQUE BRUSH		1 piece

### EX-3 PASTE OPAQUE BASIC KIT

#### Basic Assortment of Paste Opaque

NORITAKE PASTE OPAQUE EX-3 BASIC KIT is a paste-type opaque kit that is extremely easy to use. Even a novice can completely mask the metal with a thin even coat. It is highly effective at masking the metal line at the margin. Paste-opaque can mask the metal color with a thinner coat than that required for powder opaque. This thinner coat provides more space for subsequent porcelain layers, permitting a more natural appearance.

P. O. BASIC KIT (102 g)		#102-0080EU
BASIC SHADE	6 g each	16 colors
BASE PASTE (POBA)	6 g each	1 color
PASTE OPAQUE BRUSH		2 pieces

### EX-3 PASTE OPAQUE MODIFIER KIT

#### Modifier Assortment of Paste Opaque

The PASTE OPAQUE EX-3 MODIFIER may be mixed with PASTE OPAQUE EX-3 to customize the shade or may be applied alone for minor modifications.

P. O. MODIFIER KIT (24 g)		#102-0090EU
WHITE	3 g each	
YELLOW	3 g each	
BLUE	3 g each	
GRAY	3 g each	
PINK	3 g each	
ORANGE	3 g each	
EARTH BROWN	3 g each	
REDISH BROWN	3 g each	
MODIFIER BRUSH		1 piece
PASTE OPAQUE LIQUID	10 ml	1 bottle

### EX-3 nCOLOR PASTE OPAQUE BASIC KIT

Basic Assortment of Paste Opaque (nCOLOR)

NORITAKE PASTE OPAQUE EX-3 BASIC KIT is a paste-type opaque kit that is extremely easy to use. Even a novice can completely mask the metal with a thin even coat. It is highly effective at masking the metal line at the margin. Paste-opaque can mask the metal color with a thinner coat than that required for powder opaque. This thinner coat provides more space for subsequent porcelain layers, permitting a more natural appearance.

nCOLOR P. O. BASIC KIT (102 g)	#102-0100EU
BASIC SHADE	6 g each 16 colors
BASE PASTE (POBA)	6 g each 1 color
PASTE OPAQUE BRUSH	2 pieces

### EX-3 UNIVERSAL PASTE OPAQUE BASIC KIT

Complete Assortment of Universal Paste Opaque

EX-3 Universal Paste Opaque can be used for a wide range of alloys such as High Noble, Noble and non-precious alloys. POBA is not necessary to be used when applying on Co-Cr or Ni-Cr without beryllium. Its handling is extremely easy! A wide variety of 22 shades including Noritake Original Shades and Esthetic Shades are available.

EX-3 UNIVERSAL PASTE OPAQUE BASIC KIT is a complete assortment kit of all 22 available shades. Basic shades are based on "nColor" and its handling is very easy. It is possible to use EX-3 Layering over the metal frameworks.

UNIVERSAL P. O. BASIC KIT (132 g)	#102-0110EU
UNIVERSAL PASTE	6 g each 22 colors
PASTE OPAQUE BRUSH	1 piece

### EX-3 UNIVERSAL PASTE OPAQUE MODIFIER KIT

Modifier Assortment of Universal Paste Opaque

EX-3 UNIVERSAL PASTE OPAQUE MODIFIER KIT may be mixed with EX-3 UNIVERSAL PASTE OPAQUE to customize the shade or may be applied alone for minor modifications.

UNIVERSAL P. O. MODIFIER KIT (24 g)	#102-0120EU
WHITE	3 g each
YELLOW	3 g each
BLUE	3 g each
GRAY	3 g each
PINK	3 g each
ORANGE	3 g each
EARTH BROWN	3 g each
REDISH BROWN	3 g each
MODIFIER BRUSH	1 piece

### EX-3 PASTE OPAQUE NP BONDER

Opaque Bonding Agent for Non-precious Metal

This new reliable bonder is optimized for secure bonding between porcelain and metal frameworks made of non-precious alloys. Besides being capable of reducing the black lines that can occur at the margins of metal frameworks, it is also effective in reducing the likelihood of yellow or green discoloration of the porcelain after baking.

EX-3 PASTE OPAQUE NP BONDER (6 g)	#102-4532EU
OPAQUE	6 g

### EX-3 nCOLOR BODY KIT

Full Kit excluding Opaque (nCOLOR)

EX-3 nCOLOR BODY KIT is an ideal assortment of basic shade excluding opaque. The purchase of PASTE OPAQUE or UNIVERSAL PASTE OPAQUE is highly recommended.

nCOLOR BODY KIT (400 g)	#102-0140EU
BODY	10 g each 16 colors
ENAMEL	10 g each 3 colors
TRANSLUCENT	10 g each 4 colors
CERVICAL	10 g each 4 colors
MODIFIER	10 g each 11 colors
ADD-ON	10 g each 2 colors
FORMING LIQUID	20 ml 1 bottle

### EX-3 VALUE SHADE BODY KIT

All 26 Shades of Value Shade Body Assortment

EX-3 VALUE SHADE BODY KIT is an ideal assortment of basic shades excluding opaque. The purchase of PASTE OPAQUE or UNIVERSAL PASTE OPAQUE is highly recommended.

VALUE SHADE BODY KIT (260 g)	#102-0150EU
BODY:	1110B 1120B 2015B
10 g each	2025B 2110B 2120B
	2130B 2215B 2225B
	3015B 3025B 3110B
	3120B 3130B 3215B
	3225B 4015B 4025B
	4110B 4120B 4130B
	4215B 4225B 5110B
	5120B 5130B NWOB
	NW0.5B



### EX-3 MARGIN PORCELAIN KIT

Margin Porcelain Assortment

Designed for porcelain-fused-to-metal crowns with porcelain margins, EX-3 MARGIN PORCELAIN is used in combination with Noritake's layering porcelains. Its low shrinkage simplifies development of precise marginal fit. It is specially formulated with the appropriate balance between reflection and transmission to mask the metal while possessing sufficient translucency for a natural appearance.

MARGIN KIT (150 g)	#102-0160EU
BASIC SHADE	10 g each 13 colors
POWDER FOR DILUTION	10 g 1 color
POWDER FOR RETOUCHING	10 g 1 color

### EX-3 ENAMEL/TRANSLUCENT COMPLETE KIT

All Shades of EX-3 Enamel, Translucent and CCV

This kit contains newly developed highly translucent and opal porcelain for an even easier, true to life fabrication of natural teeth in order to reproduce complexities in shades and texture of natural enamel in the best possible way. It consists of extremely fine particles and precisely reproduces the properties of natural opalescence and translucency.

E/T COMPLETE KIT (140 g)		#102-0170EU
ENAMEL	10 g each	5 colors
TRANSLUCENT	10 g each	5 colors
CERVICAL	10 g each	4 colors

### EX-3 LUSTER CCV KIT

Luster & CCV Shades including Aqua Blue & Super Gray

EX-3 LUSTER PORCELAIN is designed to replicate the exact subtle complexities in shades and texture of natural enamel. It contains extremely fine particles, and it accurately reproduces the natural opalescence of enamel. CCV PORCELAIN is a high translucency cervical porcelain. It is very effective when applying on cervical area.

LUSTER CCV KIT (160 g)				#102-0180EU
10 g each	LTO	LT1	T BLUE	
	AQUA BLUE 1	AQUA BLUE 2	LT NATURAL	
	LT SUPER GRAY	CREAMY ENAMEL	SUN BRIGHT	
	INCISAL AUREOLA	CREAMY WHITE	LT YELLOW	
	CCV-1	CCV-2	CCV-3	
	CCV-4			

### EX-3 LUSTER COMPLETE KIT

All Shades of EX-3 Luster

LUSTER PORCELAIN is designed to replicate the exact subtle complexities in shades and texture of natural enamel. It contains extremely fine particles, and it accurately reproduces the natural opalescence of enamel.

LUSTER COMPLETE KIT (190 g)		#102-0190EU
LUSTER	10 g each	19 colors

### EX-3 OPACIOUS BODY COMPLETE KIT

Opacious Body Assortment including OB Pale Pink

EX-3 OPACIOUS BODY PORCELAIN is formulated with an intermediate degree of translucency, between that of opaque and body porcelain. It is useful in a variety of situations, for example, in the cervical areas of pontics where thick body porcelain becomes too translucent. COMPLETE KIT includes OB PALE PINK as new line-ups.

O. B. COMPLETE KIT (200 g)		#102-0200EU
BASIC SHADE	10 g each	17 colors
OB MODIFIER	10 g each	3 colors

### EX-3 VALUE SHADE OPACIOUS BODY KIT

All 26 Shades of Value Shade Opacious Body Assortment

EX-3 VALUE SHADE OPACIOUS BODY PORCELAIN is formulated with an intermediate degree of translucency, between that of opaque and body porcelain. It is useful in a variety of situations, for example, in the cervical areas of pontics where thick body porcelain becomes too translucent.

VALUE SHADE OPACIOUS BODY KIT (260 g)				#102-0210EU
OPACIOUS	OB1110	OB1120	OB2015	
BODY:	OB2025	OB2110	OB2120	
10 g each	OB2130	OB2215	OB2225	
	OB3015	OB3025	OB3110,	
	OB3120	OB3130	OB3125	
	OB3225	OB4015	OB4025	
	OB4110	OB4120	OB4130	
	OB4215	OB4225	OB5110	
	OB5120	OB5130		

### EX-3 EXTERNAL STAIN (ES) KIT

Complete Assortment of External Stain

SUPER PORCELAIN EXTERNAL STAIN is designed to be used with the SUPER PORCELAIN EX-3 product line. Staining can reproduce the complex color shades observed in natural teeth. SUPER PORCELAIN EX-3 EXTERNAL STAIN possesses thermal expansion properties identical to SUPER PORCELAIN EX-3. Consequently, when used in combination, there is minimal risk of separation even after long term intraoral function.

EXTERNAL STAIN KIT (73 g)		#102-0220EU
PURE WHITE	3 g each	
GRAY	3 g each	
BLACK	3 g each	
BLUE	3 g each	
GREEN 1	3 g each	
GREEN 2	3 g each	
YELLOW	3 g each	
ORANGE 1	3 g each	
ORANGE 2	3 g each	
CV-1	3 g each	
CV-2	3 g each	
CV-3	3 g each	
EARTH BROWN	3 g each	
REDDISH BROWN	3 g each	
SALMON PINK	3 g each	
PINK	3 g each	
RED	3 g each	
A+	3 g each	
B+	3 g each	
C+	3 g each	
D+	3 g each	
GLAZE	10 g each	1 bottle
ES LIQUID	10 ml	1 bottle

### EX-3 INTERNAL STAIN (IS) COMPLETE KIT Complete Assortment of Internal Stain including Fluoro

Developed in collaboration with the renowned ceramist Mr. Aoshima, INTERNAL STAIN makes the innovative “Internal Staining Technique” practical for everyday laboratory use. The internal staining technique is the best method to replicate many of the most intricate patterns of shade variation found in natural teeth. IS FLUORO is added to the kit.

INTERNAL STAIN COMPLETE KIT (57 g) #102-0240EU		
INCISAL BLUE 1	3 g each	
INCISAL BLUE 2	3 g each	
MAMELON ORANGE 1	3 g each	
MAMELON ORANGE 2	3 g each	
REDDISH BROWN	3 g each	
EARTH BROWN	3 g each	
CERVICAL 1	3 g each	
CERVICAL 2	3 g each	
CERVICAL 3	3 g each	
WHITE	3 g each	
SALMON PINK	3 g each	
RED	3 g each	
GRAY	3 g each	
FLUORO	3 g each	
A+	3 g each	
B+	3 g each	
C+	3 g each	
D+	3 g each	
BRIGHT (DILUTION)	3 g each	1 bottle
IES LIQUID	10 ml	1 bottle

### EX-3 ESTHETIC WHITE KIT Assortment of Noritake Esthetic White (EW) Shades

EX-3 ESTHETIC WHITE KIT is for creating whiter shades rather than NW shades, which is not only pure bleaching shades but also natural and beautiful white shades.

ESTHETIC WHITE KIT (102 g) #102-0270EU				
6 g each	POEWO	POEW	EWOOB	EWOB
10 g each	EWB	EWYB	ELT1	ELT2
	ELT3	SILKY E1	SILKY E2	
1 piece	PO BRUSH			

### EX-3 TISSUE KIT Assortment of 7 Tissue Colors

EX-3 TISSUE KIT is a complete kit of 7 Noritake Tissue colors. All colors are very useful for implant work.

TISSUE KIT (70 g) #102-0280EU	
TISSUE	10 g each
	10 g each
	TISSUE 5-7
	TISSUE 1-4



### ADDMATE KIT Assortment of Repair Porcelains

ADDMATE PORCELAIN is designed for the modification of porcelain-fused-to-metal restorations in the final stages of completion. It requires a firing temperature of only 660 - 700 °C (220 -1292 °F). It is very well suited for minor morphological corrections and repairing of minor defects. Additionally it may also be used for the delicate task of modifying a post-soldered fixed partial denture. ADDMATE is not compatible with porcelains designed to be used with titanium-based alloys. However, ADDMATE is highly recommended for latter-stage modifications of any other porcelain whose CTE lies between 12.0 and 13.0 x 10 (-6) °C.

7 FARBEN (70 g) #102-0250EU	
LIGHT OPAQUE	10 g each
DARK OPAQUE	10 g each
LIGHT BODY	10 g each
DARK BODY	10 g each
ENAMEL	10 g each
TRANSLUCENT	10 g each
ADDMATE FORMING LIQUID	1 bottle

### EX-3 SPEED ENAMEL Assortment of Repair Porcelains

EX-3 Speed Enamel is a new item especially developed for 2 layers build-up technique. Comparing with the conventional enamel, Speed Enamel has a beautiful opalescent effect. The aesthetic restoration can be obtained easily with a simple application method. It is suitable to not only aesthetic work but mass-production. Start your simple & beautiful work with Speed Enamel NOW!

SPEED ENAMEL		
S1	10 g	#102-2441EU
S1	200 g	#102-2443EU
S1	50 g	#102-2442EU
S2	10 g	#102-2451EU
S2	200 g	#102-2453EU
S2	50 g	#102-2452EU
S3	10 g	#102-2461EU
S3	200 g	#102-2463EU
S3	50 g	#102-2462EU
S4	10 g	#102-2471EU
S4	200 g	#102-2473EU
S4	50 g	#102-2472EU

### SCREENING PORCELAIN KIT Assortment of Masking Porcelain for PLV & PJC

SCREENING PORCELAIN is to be used in combination with NORITAKE SUPER PORCELAIN EX-3 for making porcelain laminate veneers, all ceramic inlays and onlays and porcelain jacket crowns. The kit contains two basic types of material to neutralize the effects of discolored dentin: 1.) masking porcelain to achieve high value, 2.) complimentary colors to achieve high translucency. The choice is yours. NWOG and NW0.5G are also available as individuals to create whitened shades.

17 COLORS (170 g) #106-0010EU		
SCREENING COLOR	10 g each	10 colors
SCREENING MODIFIER	10 g each	3 colors
COMPLEMENTARY COLOR	10 g each	4 colors
FORMING LIQUID	20 ml	1 bottle











## LAB COMPOSITES

ESTENIA™ C & B is a polymer-based crown and bridge material for creation of facing cast crowns, facing cast bridges, jacket crowns, inlays, onlays and bridges with frameworks.

CHROMA ZONE™ COLOR STAIN is designed to be used for developing color characterization of crowns and bridges or inlays/onlays made of composite materials such as ESTENIA™ C & B.



## ESTENIA™ C & B

ESTENIA™ C & B, the advanced material for the preparation of crowns and bridges, is one of a new class of materials, the hybrid ceramics. Hybrid ceramics are advanced composite materials with high reinforcement resistance, which is the result of the loading of a resin matrix containing a micro filler (particle size 2 µm) with a high proportion of nano filler particles (particle size 2 nm). Thanks to the high filler substance proportion of 92% by weight (82% by volume), ESTENIA™ C & B has especially high density, which is achieved by a special filler surface treatment technique. This gives a highly homogeneous structure with excellent physical properties which is particularly suitable for posterior and anterior tooth restorations. EG Fiber is a fiber framework material for use in bridge spans, consisting of monomers, surface-treated glass-fiber, and surface-treated micro filler. The indication enables the bridge used framework material by using an exclusive glass fiber frame EG Fiber. ESTENIA™ thus provides an easy-to-use aesthetic alternative to ceramic and metal crowns.

### IN SHORT:

- High-filled hybrid ceramic (filler content 92 wt %, 82 vol %), only one in the world with physical properties similar to ceramic
- Excellent physical properties, and offering aesthetic restorations

#### ESTENIA C & B BODY OPAQUE

ONW0.5	2.0 ml	#2221-EU
OA1	2.0 ml	#2222-EU
OA2	2.0 ml	#2223-EU
OA3	2.0 ml	#2224-EU
OA3.5	2.0 ml	#2225-EU
OA4	2.0 ml	#2226-EU
ONW0	2.0 ml	#2227-EU
OB1	2.0 ml	#2228-EU
OB2	2.0 ml	#2229-EU
OB3	2.0 ml	#2230-EU
OB4	2.0 ml	#2231-EU
OC1	2.0 ml	#2232-EU
OC2	2.0 ml	#2233-EU
OC3	2.0 ml	#2234-EU
OC4	2.0 ml	#2235-EU
OD2	2.0 ml	#2236-EU
OD3	2.0 ml	#2237-EU
OD4	2.0 ml	#2238-EU
ONP1.5	2.0 ml	#2239-EU
ONP2.5	2.0 ml	#2240-EU

#### ESTENIA CERVICAL OPAQUE

CO1	2.0 ml	#2241-EU
CO2	2.0 ml	#2242-EU
CO3	2.0 ml	#2243-EU
CO4	2.0 ml	#2244-EU
CO5	2.0 ml	#2245-EU

#### ESTENIA C & B OPAQUE PRIMER

	9.0 ml	#2250-EU
--	--------	----------

#### ESTENIA C & B OPAQUE MODIFIER

W	1.0 ml	#2251-EU
P	1.0 ml	#2252-EU
G	1.0 ml	#2253-EU
YBR	1.0 ml	#2254-EU
O	1.0 ml	#2255-EU
BR	1.0 ml	#2256-EU
PUR	1.0 ml	#2257-EU
RP	1.0 ml	#2258-EU
DP	1.0 ml	#2259-EU

#### ESTENIA C & B GINGIVAL

P1	6.4 g/2.6 ml	#2261-EU
P2	6.4 g/2.6 ml	#2262-EU
P3	6.4 g/2.6 ml	#2263-EU
P4	6.4 g/2.6 ml	#2264-EU
P5	6.4 g/2.6 ml	#2265-EU

#### ESTENIA C & B TRANSPARENT

T0	6.4 g/2.6 ml	#2270-EU
T1	6.4 g/2.6 ml	#2271-EU
T2	6.4 g/2.6 ml	#2272-EU
TLV	6.4 g/2.6 ml	#2273-EU

#### ESTENIA C & B TRANSPARENT EFFECT

TG	6.4 g/2.6 ml	#2274-EU
AM	6.4 g/2.6 ml	#2275-EU
AM-Y	6.4 g/2.6 ml	#2276-EU
ME	6.4 g/2.6 ml	#2277-EU
TB	6.4 g/2.6 ml	#2278-EU

#### ESTENIA C & B ENAMEL

E0	6.4 g/2.6 ml	#2280-EU
E1	6.4 g/2.6 ml	#2281-EU
E2	6.4 g/2.6 ml	#2282-EU
E3	6.4 g/2.6 ml	#2283-EU
E4	6.4 g/2.6 ml	#2284-EU

#### ESTENIA C & B ENAMEL EFFECT

CE	6.4 g/2.6 ml	#2291-EU
CE-O	6.4 g/2.6 ml	#2292-EU
CE-Y	6.4 g/2.6 ml	#2293-EU
WE	6.4 g/2.6 ml	#2294-EU
MA-1	6.4 g/2.6 ml	#2295-EU
MA-2	6.4 g/2.6 ml	#2296-EU
IE	6.4 g/2.6 ml	#2297-EU

#### ESTENIA C & B DENTIN

DNW0.5	6.4 g/2.6 ml	#2301-EU
DA1	6.4 g/2.6 ml	#2302-EU
DA2	6.4 g/2.6 ml	#2303-EU
DA3	6.4 g/2.6 ml	#2304-EU
DA3.5	6.4 g/2.6 ml	#2305-EU
DA4	6.4 g/2.6 ml	#2306-EU
DNW0	6.4 g/2.6 ml	#2307-EU
DB1	6.4 g/2.6 ml	#2308-EU
DB2	6.4 g/2.6 ml	#2309-EU
DB3	6.4 g/2.6 ml	#2310-EU
DB4	6.4 g/2.6 ml	#2311-EU
DC1	6.4 g/2.6 ml	#2312-EU
DC2	6.4 g/2.6 ml	#2313-EU
DC3	6.4 g/2.6 ml	#2314-EU
DC4	6.4 g/2.6 ml	#2315-EU
DD2	6.4 g/2.6 ml	#2316-EU
DD3	6.4 g/2.6 ml	#2317-EU
DD4	6.4 g/2.6 ml	#2318-EU
DNP1.5	6.4 g/2.6 ml	#2319-EU
DNP2.5	6.4 g/2.6 ml	#2320-EU

#### ESTENIA C & B STANDARD KIT

Opaque Resin	2.0 ml	#2395-EU
--------------	--------	----------

#### ESTENIA C & B A3 KIT

Opaque Resin	2.0 ml	#2396-EU
--------------	--------	----------



**ESTENIA C & B OPACIOUS DENTIN**

ODNW0.5	6.4 g/2.6 ml	#2331-EU
ODA1	6.4 g/2.6 ml	#2332-EU
ODA2	6.4 g/2.6 ml	#2333-EU
ODA3	6.4 g/2.6 ml	#2334-EU
ODA3.5	6.4 g/2.6 ml	#2335-EU
ODA4	6.4 g/2.6 ml	#2336-EU
ODNW0	6.4 g/2.6 ml	#2337-EU
ODB1	6.4 g/2.6 ml	#2338-EU
ODB2	6.4 g/2.6 ml	#2339-EU
ODB3	6.4 g/2.6 ml	#2340-EU
ODB4	6.4 g/2.6 ml	#2341-EU
ODC1	6.4 g/2.6 ml	#2342-EU
ODC2	6.4 g/2.6 ml	#2343-EU
ODC3	6.4 g/2.6 ml	#2344-EU
ODC4	6.4 g/2.6 ml	#2345-EU
ODD2	6.4 g/2.6 ml	#2346-EU
ODD3	6.4 g/2.6 ml	#2347-EU
ODD4	6.4 g/2.6 ml	#2348-EU
ODNP1.5	6.4 g/2.6 ml	#2349-EU
ODNP2.5	6.4 g/2.6 ml	#2350-EU

**ESTENIA C & B CERVICAL**

CE1	6.4 g/2.6 ml	#2361-EU
CE2	6.4 g/2.6 ml	#2362-EU
CE3	6.4 g/2.6 ml	#2363-EU
CE4	6.4 g/2.6 ml	#2364-EU
CE5	6.4 g/2.6 ml	#2365-EU
CE6	6.4 g/2.6 ml	#2366-EU
CE7	6.4 g/2.6 ml	#2367-EU
CE8	6.4 g/2.6 ml	#2368-EU

**ESTENIA C & B CERVICAL TRANSPARENT**

CT1	6.4 g/2.6 ml	#2371-EU
CT2	6.4 g/2.6 ml	#2372-EU
CT3	6.4 g/2.6 ml	#2373-EU
CT4	6.4 g/2.6 ml	#2374-EU
CT5	6.4 g/2.6 ml	#2375-EU
CT6	6.4 g/2.6 ml	#2376-EU

**ESTENIA C & B CERVICAL DENTIN EFFECT**

CDE1	6.4 g/2.6 ml	#2381-EU
CDE2	6.4 g/2.6 ml	#2382-EU
CDE3	6.4 g/2.6 ml	#2383-EU
CDE4	6.4 g/2.6 ml	#2384-EU
CDE5	6.4 g/2.6 ml	#2385-EU

**ESTENIA C & B EG FIBER**

Anterior	2 pieces/12 cm	#2401-EU
Posterior	2 pieces/12 cm	#2402-EU

**ESTENIA C & B EG FLOW**

	1,0 ml	#2403-EU
--	--------	----------

**ESTENIA C & B EG CORE**

	6 pieces	#2404-EU
--	----------	----------

**ESTENIA C & B EG FIBER SET**

	1 piece	#2405-EU
--	---------	----------

**CHROMA ZONE™ COLOR STAIN**

CHROMA ZONE™ COLOR STAIN are light-curing composite pastes of low viscosity and are used for the characteristic coloring of crowns and bridges or inlays/ onlays made of composite materials such as ESTENIA™ C & B. The CHROMA ZONE™ COLOR STAIN Kit includes 11 color pastes, one clear paste, and accessories.

In Short:

- Abundant colors
- Excellent handling property

**CHROMA ZONE COLOR STAIN FULL KIT**

1 each of all shades below	#1600-EU
----------------------------	----------

**CHROMA ZONE COLOR STAIN**

Clear (C)	0.5 ml	#1601-EU
White (W)	0.5 ml	#1602-EU
Pale Pink (PP)	0.5 ml	#1603-EU
Yellow (Y)	0.5 ml	#1604-EU
Orange (O)	0.5 ml	#1605-EU
Red (R)	0.5 ml	#1606-EU
Brown (B)	0.5 ml	#1607-EU
Dark Brown (DBR)	0.5 ml	#1608-EU
Russet Brown (RBR)	0.5 ml	#1609-EU
Blue (BLU)	0.5 ml	#1610-EU
Black (BL)	0.5 ml	#1611-EU

**CHROMA ZONE COLOR STAIN CLEAR PASTE**

	1.2 ml	#1620-EU
--	--------	----------

**CHROMA ZONE COLOR STAIN COLOR TABLE**

	1 pc	#1625-EU
--	------	----------







## LAB MATERIALS

The flow of Noritake SUPER ROCK EX is superior to conventional products and its thixotropic properties facilitate handling.

NORI-VEST series are refractory die material for porcelain inlays, onlays and all ceramic crowns.





### SUPER ROCK EX

The flow of Noritake SUPER ROCK EX is superior to conventional products and its thixotropic properties facilitate handling. It easily fills and reproduces the finest details of the impression. Two colors, BROWN and NEUTRAL GRAY, are available.

#### SUPER ROCK EX

BROWN	3 kg/box	#318-0015EU
NEUTRAL GRAY	3 kg/box	#318-0025EU



### NORI-VEST

NORI-VEST series are refractory die material for porcelain inlays, onlays and all ceramic crowns.

- It has a sufficient strength to withstand easily baking and build-up.
- NORI-VEST is easy to remove after the porcelain is baked, reducing the risk of breaking the inlays.
- The mixed material flows easily, filling all the details in the impression.
- The fit is excellent.

#### NORI-VEST

BIGSET	30 g x 99/600 ml	#320-0010EU
ZIRCONIA SET	30 g x 33/240 ml	#320-0020EU
AL/ZR LIQUID	240 ml	#320-0060EU
SET	30 g x 33/200ml	#320-0070EU
POWDER	30 g x 33	#320-0080EU
LIQUID	200 ml	#320-0090EU







CERAMIC ACCESSORIES

COLOR GUIDE

COLOR GUIDE is a unique color guide for all Noritake porcelain. The shape is designed with original crescent shape. This color guide makes ceramist work very easy and get correct shade image so that ceramists can create beautiful porcelain work with Noritake porcelain.

COLOR GUIDE

COLOR GUIDE 121 EX-3 N-COLOR POWDER OPAQUE	#211-2019EU
COLOR GUIDE 122 EX-3 PASTE OPAQUE	#211-2029EU
COLOR GUIDE 123 EX-3 N-COLOR PASTE OPAQUE	#211-2039EU
COLOR GUIDE 124 EX-3 PASTE OPAQUE MODIFIER	#211-2049EU
COLOR GUIDE 125 EX-3 MARGIN	#211-2059EU
COLOR GUIDE 126 EX-3 OPACIOUS BODY	#211-2069EU
COLOR GUIDE 127 EX-3 BODY	#211-2079EU
COLOR GUIDE 128 EX-3 N-COLOR BODY	#211-2089EU
COLOR GUIDE 129 EX-3 ENAMEL & TRANSLUCENT	#211-2099EU
COLOR GUIDE 130 EX-3 LUSTER	#211-2109EU
COLOR GUIDE 131 EX-3 MODIFIER	#211-2119EU
COLOR GUIDE 132 EX-3 UNIVERSAL PASTE OPAQUE	#211-2129EU
COLOR GUIDE 133 EX-3 UNIVERSAL PASTE OPAQUE MODIFIER	#211-2139EU
COLOR GUIDE 134 EX-3 VALUE SHADE BODY	#211-2149EU
COLOR GUIDE 135 EX-3 VALUE SHADE OPACIOUS BODY	#211-2159EU
COLOR GUIDE 1005 EX-3 COMPLETE / CONVENTIONAL	#211-2169EU
COLOR GUIDE 1006 EX-3 COMPLETE / N-COLOR	#211-2179EU
COLOR GUIDE 1007 EX-3 COMPLETE / POWDER OPAQUE	#211-2189EU
COLOR GUIDE 421 CZR SHADE BASE	#211-2299EU
COLOR GUIDE 422 CZR MARGIN	#211-2309EU
COLOR GUIDE 423 CZR OPACIOUS BODY	#211-2319EU
COLOR GUIDE 424 CZR BODY	#211-2329EU
COLOR GUIDE 425 CZR ENAMEL & TRANSLUCENT	#211-2339EU
COLOR GUIDE 426 CZR LUSTER	#211-2349EU
COLOR GUIDE 427 CZR MODIFIER	#211-2359EU
COLOR GUIDE 428 CZR VALUE SHADE BODY	#211-2369EU
COLOR GUIDE 429 CZR VALUE SHADE OPACIOUS BODY	#211-2379EU
COLOR GUIDE CZR FC PASTE STAIN	#211-2389EU
COLOR GUIDE 4002 CZR COMPLETE	#211-2399EU
COLOR GUIDE 521 CZR PRESS LF EW BODY & H-BODY	#211-2409EU
COLOR GUIDE 522 CZR PRESS LF ENAMEL & TRANSLUCENT	#211-2419EU
COLOR GUIDE 523 CZR PRESS LF LUSTER	#211-2429EU
COLOR GUIDE 524 CZR PRESS LF MODIFIER	#211-2439EU
COLOR GUIDE CZR PRESS LF SHADE BASE STAIN	#211-2449EU

COLOR GUIDE

COLOR GUIDE CZR PRESS LF SHADE BASE STAIN MODIFIER	#211-2459EU
COLOR GUIDE 5002 CZR PRESS LF COMPLETE	#211-2469EU
COLOR GUIDE 703 SCREENING PORCELAIN	#211-2549EU
ES COLOR GUIDE	#211-0769EU
IS COLOR GUIDE	#211-0779EU

SHADE GUIDE

The Noritake SHADE GUIDE has been specifically designed to match precisely with Noritake Porcelains. It will make shade taking from natural teeth very easy.

SHADE GUIDE

NORITAKE SHADE GUIDE	211-1189EU
----------------------	------------



ESTHETIC WHITE SHADE GUIDE

ESTHETIC WHITE SHADE GUIDE is a shade guide for new bleaching shades. Esthetic white shades are even whiter than NW shades.

ESTHETIC WHITE SHADE GUIDE

211-1199EU



PEARL SURFACE

PEARL SURFACE is a porcelain polishing material for use after the final recontouring. It adds a natural luster to the surface without altering the subtleties in the texture. It is also suitable for polishing hard resin and denture-base acrylic resin.

PEARL SURFACE

PEARL SURFACE SET		#221-0720EU
PEARL SURFACE F	200 g	#221-0739EU
PEARL SURFACE C	1 pc	#221-0749EU
PEARL SURFACE FELT WHEEL	6 pcs.	#221-0759EU
PEARL SURFACE Z	20 g	#221-0769EU

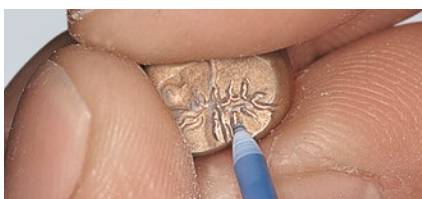


## MEISTER FINISH

Minor adjustments on porcelain margins. Grooves in occlusal metal. Inside surface of PFMs and full cast metal crowns. The surface of the access hole of an implant supported crown. The finishing line of a denture frame-work. The tooth-side-surface of rests.

### MEISTER FINISH

MEISTER FINISH ASSORT SET	3 pcs	#221-0010EU
MEISTER FINISH C (BROWN) SET	3 pcs	#221-0020EU
MEISTER FINISH F (RED) SET	3 pcs	#221-0030EU
MEISTER FINISH M (BLUE) SET	3 pcs	#221-0040EU
MEISTER FINISH C (BROWN)		#221-0059EU
MEISTER FINISH F (RED)		#221-0069EU
MEISTER FINISH M (BLUE)		#221-0079EU



### RING/ FORMER

RING/FORMER SET 100/200		#926-0570EU
RING/FORMER SET 100		#926-0580EU
RING/FORMER SET 200		#926-0590EU
RING/FORMER SET 300		#926-0600EU
RING 100		#926-0619EU
RING 200		#926-0629EU
RING 300		#926-0639EU
FORMER 100		#926-0649EU
FORMER 200		#926-0659EU
FORMER 300		#926-0669EU

### DISPO PLUNGER

CZR PRESS DISPO PLUNGER 2G	50 pcs/box	#926-0689EU
CZR PRESS DISPO PLUNGER 5G	50 pcs/box	#926-0699EU

## PORCELAIN PALETTE

### 1) Mixing Palette

The Mixing Palette with its stacked design keeps the mixed porcelain separate.

### 2) Opaque Palette

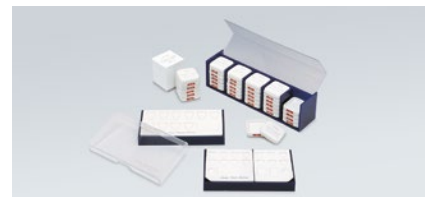
The indentations in the surface effectively prevent the cross-contamination of powdered opaques.

### 3) Stain Palette

A set of two palettes. The smaller one is easy to hold in one hand for convenience when custom staining.

### PORCELAIN PALETTE

MIXING PALETTE	5 pcs	#226-0489EU
MIXING PALETTE	25 pcs	#226-0499EU
PASTE OPAQUE BRUSH (1PC)	1 pc	#226-0339EU
PASTE OPAQUE MODIFIER BRUSH (1PC)	1 pc	#226-0349EU
OPAQUE PALETTE		#226-0539EU
STAIN PALETTE		#226-0549EU



INTERNAL LIVE STAIN PALETTE

A unique design by renowned ceramist, Mr. Aoshima, offered for the specialist, with a fan-shaped configuration which is very convenient.

I.L.S. PALETTE		
I.L.S. PALETTE ROD		#226-0469EU
I.L.S. PALETTE		#226-0479EU

PORCELAIN MAT

The MAT, made from alumina / ceramic fiber, is designed to hold all-ceramic crowns and porcelain laminate veneers during baking.

PORCELAIN MAT		
PORCELAIN MAT SQUARE	2 pcs	#126-0429EU
PORCELAIN MAT ROUND	2 pcs	#126-0439EU
PORCELAIN MAT PINS	10 pcs	#226-0449EU
PORCELAIN MAT CERAMIC COTTON		#226-0459EU



NORITAKE MAGIC

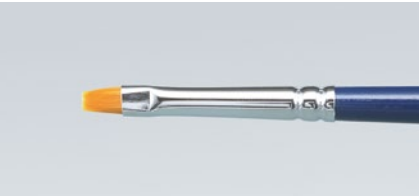
MAGIC FORMER is dry-and-set type Margin Porcelain forming liquid. It has strong adhesive properties with opaque porcelain and becomes quite hard when it is dried. It is easy to remove the coping from the die without disturbing the margin porcelain. MAGIC SEPARATOR is a pen-type porcelain separator. It is used to separate porcelain from the model material in margin porcelain area, on the gingival surface of pontics and in adjacent contact area.

NORITAKE MAGIC		
NORITAKE MAGIC SET		#926-0270EU
NORITAKE MAGIC SEPARATOR	3.5 ml	#926-0289EU
NORITAKE MAGIC FORMER	20 ml	#926-0299EU



PASTE OPAQUE BRUSH

PASTE OPAQUE BRUSH	1 pc	#226-0339EU
--------------------	------	-------------



PASTE OPAQUE MODIFIER BRUSH

PASTE OPAQUE MODIFIER BRUSH	1 pc	#226-0349EU
-----------------------------	------	-------------



TATSUJIN BRUSH

TATSUJIN BRUSH SET	4 pcs	#226-0360EU
TATSUJIN BRUSH #B		#226-0379EU
TATSUJIN BRUSH #F		#226-0389EU
TATSUJIN BRUSH #M		#226-0399EU
TATSUJIN BRUSH #S		#226-0409EU



## COMPOSITE ACCESSORIES

### ESTENIA C & B

ESTENIA C&B Modeling Liquid	6.0 ml	#2201-EU
ESTENIA C&B Add-on Primer	6.0 ml	#2202-EU
ESTENIA C&B Air Barrier Paste	10 ml	#2203-EU
ESTENIA C&B CR Sep III	20 ml	#2204-EU
ESTENIA C&B Polishing Paste 10 g	10 g	#2205-EU
ESTENIA C&B Polishing Brush	12 pcs	#2207-EU
ESTENIA C&B Felt Wheel	12 pcs	#2208-EU
ESTENIA C&B Polishing Set	10 g polishing paste, 12 pcs brush, wheel	#2209-EU
ESTENIA C&B Instrument No.1	1 pc	#1809-EU
ESTENIA C&B Instrument No.2	1 pc	#1810-EU
ESTENIA C&B Instrument No.3	1 pc	#1811-EU
ESTENIA C&B Instrument Set	No. 1, 2, 3	#2213-EU





# **DESCRIPTION & GUARANTEE**

# GUARANTEE

## DESCRIPTION

Please read carefully the relevant instructions for use before utilizing these products. KATANA™, Cerabien™, EX-3, CLEARFIL™, CLEARFIL MAJESTY™, PANAVIA™, OXYGUARD™ and TEETHMATE™ are trademarks of the company Kuraray Noritake Dental Inc. Vita™ is a trademark of the company VITA Zahnfabrik. The color descriptions are based on the best comparison.

## GUARANTEE

All of the data contained here are based on actual measurements by Kuraray Noritake Dental Inc. All of the information shown here is given to the best of our knowledge, but without the assumption of any guarantees. Kuraray Noritake Dental Inc. hereby declares that it will replace any products verified to be defective. Neither Kuraray Noritake Dental Inc. nor the distributor assume any liability for losses or damage, including direct, subsequent, and single losses, which result from the application or use or inability to use these products. The user must make sure that the product is suitable for the intended use before using it; by using the product, the user assumes responsibility for any and all risks and obligations.

## DISTRIBUTOR

Orders and deliveries from qualified specialist outlets.  
Please contact our distributor / dealer in your country:

Stamp:



**kuraray**

*Noritake*

**Kuraray Europe GmbH**

BU Medical Products  
Philipp-Reis-Str. 4  
65795 Hattersheim am Main  
Germany

Phone +49 (0) 69-305 85 835  
Fax +49 (0) 69-305 98 35 835

E-Mail [centralmarketing@kuraray.com](mailto:centralmarketing@kuraray.com)  
Website [www.kuraraynoritake.eu](http://www.kuraraynoritake.eu)



Kuraray Noritake Dental Inc.  
300 Higashiyama, Miyoshi-cho, Miyoshi, Aichi 470-0293, Japan